

**SDV in a box
#EngineeringNXT**

Wipro's driverless car simulator (also known as SDV in a box or self-driving car in a box) is a global scale simulator used to testing and validating the navigation algorithms of autonomous vehicles. This acts as a testing ground for the vehicle before being rolled out into the roads. The simulator is capable of taking the vehicle into its limits of operations by taking it through challenging real-life scenarios.

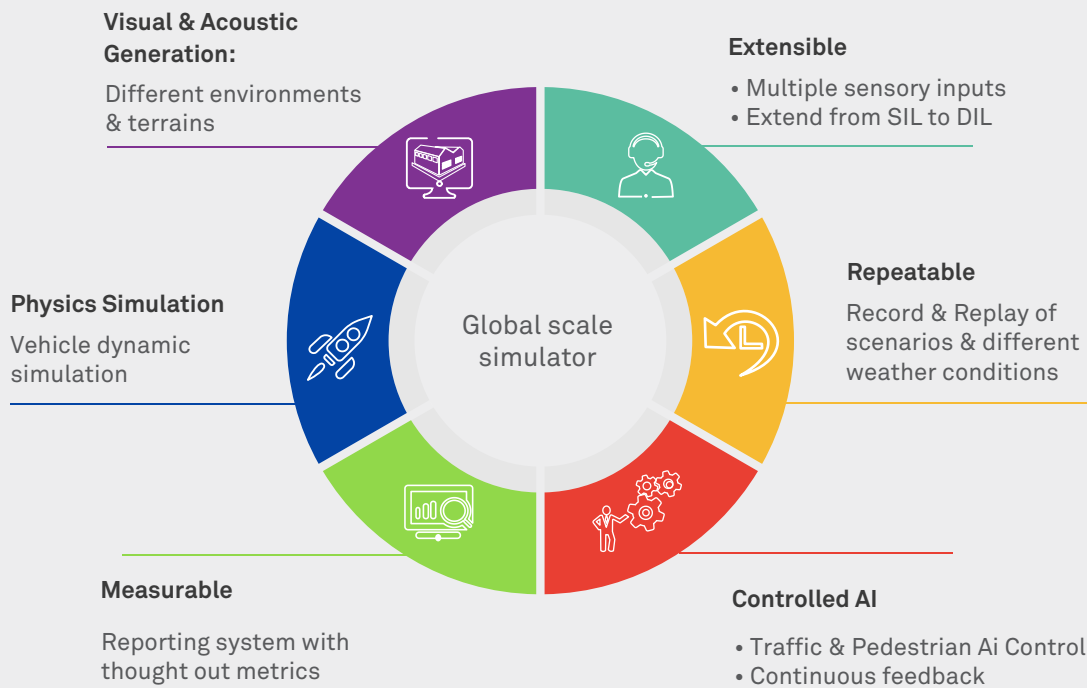
The SDV in a box is also capable of simulating multiple weather and day of time conditions and shows real time sensor data from cameras (including fish-eye) and LIDARs. The simulator is highly scalable and can be used in replicating specific world environments as well to test vehicles within such scenarios and conditions.

The simulator is capable of taking the vehicle into its limits of operations by taking it through challenging real-life scenarios

To know more about Wipro's autonomous systems and robotics, please scan the below QR code



Service and solutions



Key benefits



Wipro Limited
Doddakannelli Sarjapur Road,
Bangalore-560 035,
India

Tel: +91 (80) 2844 0011
Fax: +91 (80) 2844 0256
wipro.com

IND/MAR/JUL-DEC2019

Wipro Limited (NYSE: WIT, BSE: 507685, NSE: WIPRO) is a leading global information technology, consulting and business process services company. We harness the power of cognitive computing, hyper-automation, robotics, cloud, analytics and emerging technologies to help our clients adapt to the digital world and make them successful. A company recognized globally for its comprehensive portfolio

of services, strong commitment to sustainability and good corporate citizenship, we have over 175,000 dedicated employees serving clients across six continents. Together, we discover ideas and connect the dots to build a better and a bold new future.

For more information, please write to us at info@wipro.com