



NUTANIX

Wipro's Digital Database Services (DDS)

Redefining Database Service for the Digital Enterprise: Simplified strategic outcomes



Introduction

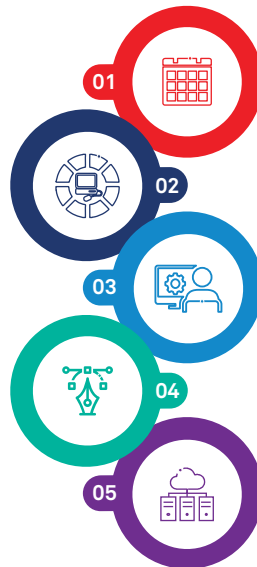
Wipro's DDS enables customers to consolidate their database workloads, manage database sprawl and allows enterprises and users to provision and

manage databases just in time, without having prior knowledge of hardware, database software and associated configurations.

Key Takeaways

Transforms the database ecosystem from complex to one that is mature and capable of disbursing Database-as-a-Service

DDS is flexible, can be integrated with other third-party Cloud Management Platform (CMP) and orchestration tools to help reuse existing investment



Focuses on resolving practical challenges seen during Day Zero, One and Two, and deliver tangible values to enterprises

Single touch deployment using certified reference architectures, security and compliance best practices and validated configurations

Truly heterogeneous, delivers provisioning across any combination of multivendor servers, OS, and databases at scale, with proven scale of more than 100,000 servers

Utilize and apply rich content catalogs and automation capabilities to accelerate service delivery and adoption of Docker/Containers for microservice based deployments

Key Benefits

Wipro's DDS delivers several key benefits

- **Cost reduction:** Reduction of acquisition and operating costs of databases
 - **Licenses:** Consolidated and effective utilization of resources (control sprawl, better lifecycle management)
 - Reduced hardware, footprint, and/or power consumption
 - Better utilization of Database administrators by allowing them to focus on innovations and optimizations
- **Rapid provisioning:** Deliver services in minutes as compared to days. Business lines, Database administrators, or non-IT users can consume services through self-service portal reducing overall time
- **Innovative pricing:** The as-a-service model makes cost predictable and allocable to business units, ensuring service quality and customer satisfaction
- **Reusability:** The solution integrates with other third-party CMP and orchestration tools to help reuse existing investment
- **Supportability:** Support for multiple database technologies and versions
- **Automation:** Enables greater efficiency and faster change delivery with better quality and predictability

Features



Database patching: Enables one touch solution for database patch deployment in an efficient, automated way

Database operation: Facilitates automation of mundane and repetitive database administration tasks that take up 30-40% of a database administrator's day



Flexibility: Facilitates provisioning and infra management capabilities of solution on both X86 and non-X86 processors

Orchestration: Facilitates hybrid cloud orchestration and allows for "Design Once run Anywhere" services



Optimization and showback: Facilitates workload optimization and show back based on utilization of resources

Automation capabilities: Facilitates deployment of out-of-the-box catalogues and Docker-based Kubernetes clusters, container server farms



Copy data management: Delivers sophisticated and customizable recovery SLAs, and enables one-click, full production quality database copy and paste operations from any point in time, while maintaining SLA-based QoS

Cloud-model experience: Provide teams managing databases on premise with an experience like that from managing in a public cloud



Leverage Wipro's Digital Database Service to enjoy a performance-driven, secure, scalable, and a true "outcome-based" experience

● **Wipro Limited**

Doddakannelli, Sarjapur Road,
Bangalore-560 035,
India

Tel: +91 (80) 2844 0011

Fax: +91 (80) 2844 0256

wipro.com

Wipro Limited (NYSE: WIT, BSE: 507685, NSE: WIPRO) is a leading global information technology, consulting and business process services company. We harness the power of cognitive computing, hyper-automation, robotics, cloud, analytics and emerging technologies to help our clients adapt to the digital world and make them successful. A company recognized globally for its comprehensive portfolio of services, strong commitment to sustainability and good corporate citizenship, we have over 175,000 dedicated employees serving clients across six continents. Together, we discover ideas and connect the dots to build a better and a bold new future.

For more information,
please write to us at
info@wipro.com

