



# Way2Go Expense Management

Automate, digitize & centralize  
end-to-end spend  
management system



## Way2Go: An end-to-end one stop solution for expense management

In the current complex business world, companies are finding it difficult to manage their expenses with multiple non-integrated systems such as reporting, expense, budget, cash advance, employee flexi-benefits/claims, and settlements. There is no single application that

manages the complete-end-to-end expense management process. Besides, managing company policies and controlling expenses is extremely challenging and shifts the company's focus from core business activities to managing budget and expenses. This leads to longer reimbursements cycle and skewed reports and dashboards.



Fig1 : Solution overview

Wipro Way2Go leverages new age technology and simplifies the expense management experience with an easy-to-use, intuitive expense reimbursement solution that helps optimize cost and improve process efficiency. The Wipro Way2Go platform is hosted on Microsoft Azure, and has a multi-channel access through web and mobile. The platform enables online integration into enterprise systems with quick and straightforward authorization for the employee. The API integrations with multiple technologies and partners enable the platform to offer a rich experience through the end-to-end expense management solution.

Way2Go automates and digitizes the end-to-end expense management process, streamlines approval process, ensures policy compliance and centralizes the entire expense reimbursement process. The focus is on delivering superior user experience through online integration with the partner/enterprise ecosystem using digital technology stack to reduce overall spends of the organization. Way2Go's highly flexible and completely centralized system harnesses aggregation, analytics, mobile, and automation technologies to achieve continuous improvement to expense ROI.

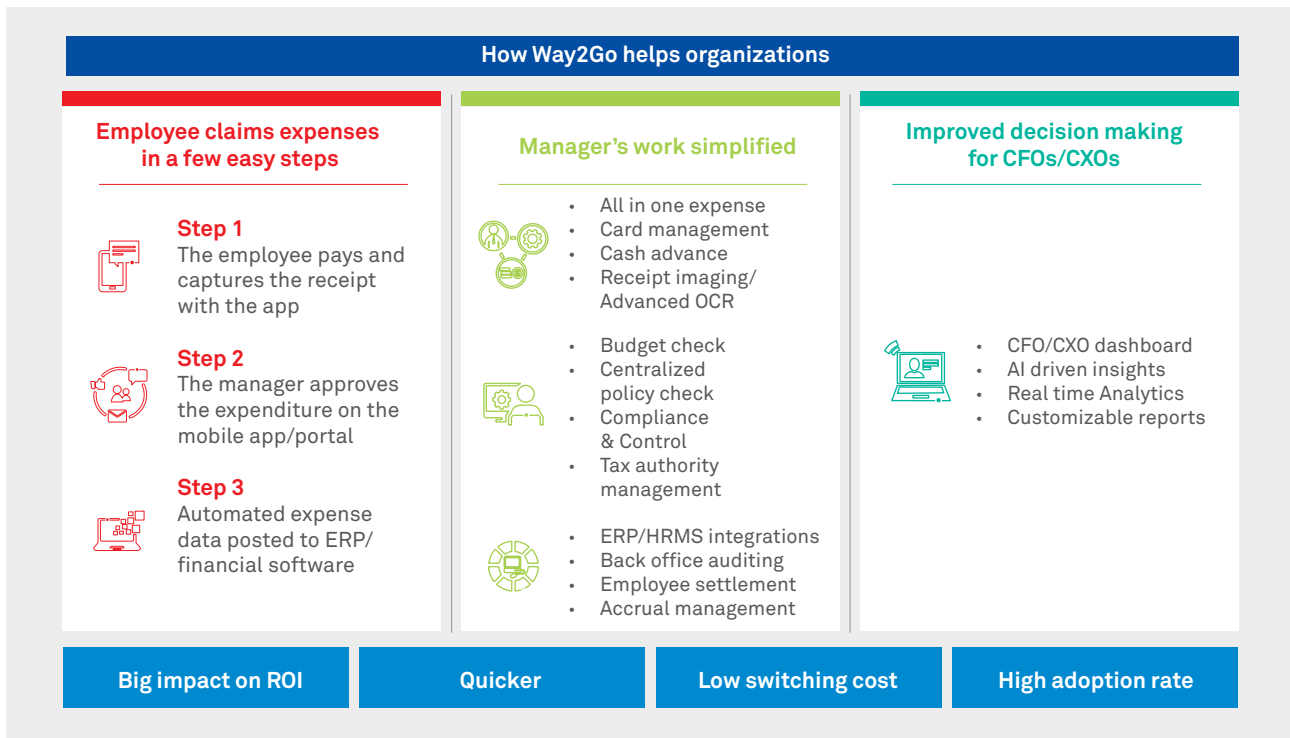
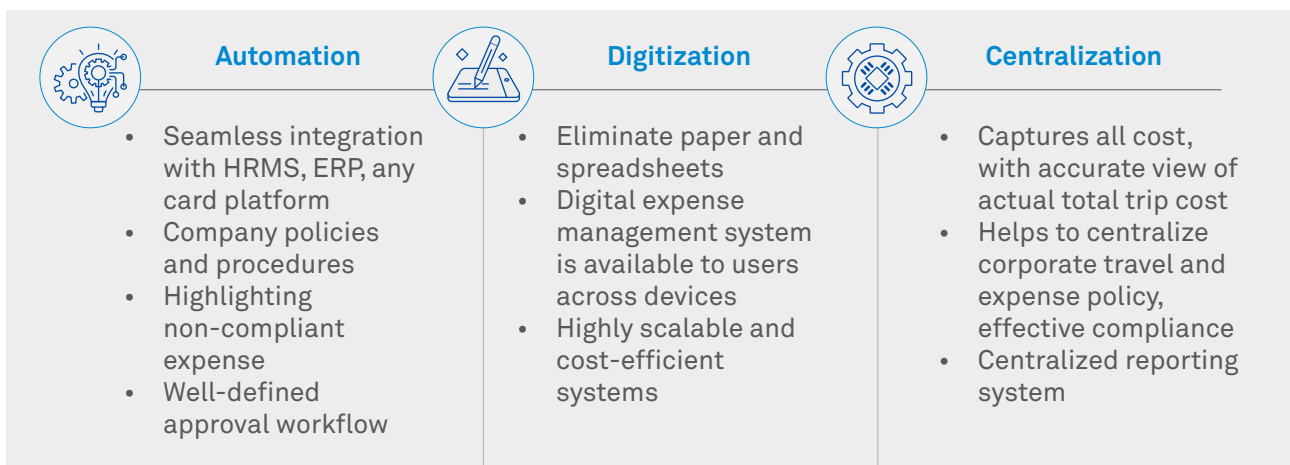


Fig2 : How Wipro Way2Go helps organizations



Automation, digitization & centralization - to get a complete holistic, 360 degree and granular visibility of the complete business spend



## Key benefits



### Intuitive user experience

Way2Go cuts out all paper receipts and processes them in the portal. When conducting a credit card payment, all data automatically shows up pre-filled in the software.



### Cost optimization

Hosted on the cloud, Wipro Way2Go does not require any investment for physical infrastructure and maintenance, thereby reducing the overall cost. The platform simplifies the expense management process and reduces the overall processing cycle time.



### Higher policy compliance

Automated policy and compliance check that fosters fraud detection. The system automatically tracks the compliant and non-compliant expenses and routes any expense that needs any exceptional approval.



### Valuable insights

Wipro Way2Go's advanced analytics provides enhanced visibility into overall costs and trends. Data can be drilled down to the finest level for smart decision-making and effective

spend planning. It also leverages prescriptive analytics to identify the likelihood of future outcomes based on historical data.



### Independence & control

Robust business rules ensure consistent policy enforcement, putting organizations in complete control of their expense management process.



### Touch-less system - safety and security

The completely paperless and touchless system eliminates the need for papers, thereby reducing the risks.



### Highly customizable & configurable system

Supports all types of workflow automation and any exceptional workflow approval. Unlimited flexi fields allow corporate to capture fields/data required to run the business.



Wipro Way2Go is an all-in-one centralized expense management platform that ensures policy compliance while delivering superior user experience



Wipro Way2Go's advanced analytics provides enhanced visibility into overall costs and trends that helps smart decision-making and effective spend planning

## Key features



### All-in-one expense

- Travel / non-travel claims
- Employee flexi-benefit claims
- Reimbursements
- Admin claims
- Travel allowance / per diems



### Cash advance management system

- Travel and non-travel advance
- Forex request, forex gain/loss
- Imprest / petty cash
- Currency revaluation



### Compliance & control

- 100% audit
- Automated policy and compliance check
- Duplicate expense highlighter
- Click and capture – approval workflow



### Card management system

- Corporate / personal credit card
- Smart card / pre-paid card import
- Forex card / international travel card



### Tax authority

- Real-time input credit calculation
- GST/VAT savings on foreign travel
- GST/VAT reimbursements through partners



### Accrual management system & IFC (Internal Finance Control)

- Forex advance revaluation
- Accounting for travel on real time basis



### Mobile-first approach

- Expense OCR capability
- Scan and capture receipt
- Automated expense creation



### Budget & reconciliation

- Budget control
- Company card reconciliation integration
- HRMS integration
- ERP integration
- Web services
- Single-sign-on (SSO), FTP



### Analytics

- Standard report catalogue
- Customizable reports and dashboard
- CFO dashboard

**Wipro Limited**

Doddakannelli, Sarjapur Road,  
Bangalore-560 035,  
India

Tel: +91 (80) 2844 0011

Fax: +91 (80) 2844 0256

**wipro.com**

Wipro Limited (NYSE: WIT, BSE: 507685, NSE: WIPRO) is a leading global information technology, consulting and business process services company. We harness the power of cognitive computing, hyper-automation, robotics, cloud, analytics and emerging technologies to help our clients adapt to the digital world and make them successful. A company recognized globally for its comprehensive portfolio of services, strong commitment to sustainability and good corporate citizenship, we have over 180,000 dedicated employees serving clients across six continents. Together, we discover ideas and connect the dots to build a better and a bold new future.

For more information,  
please write to us at  
**info@wipro.com**

