



Wipro Way2Go

Digital travel
& expense



Travel agencies around the world face intense pressure while catering to the demands of corporate clients. Business travelers demand a consumer-like experience that includes intuitive interfaces, real-time fulfillment, contextual insight and an overall delightful experience. With majority of the bookings being executed online, businesses must respond to need of the hour – digitization.

The solution

Wipro Way2Go is a Cloud-hosted platform offering multi-channel access through web and mobile.

For travel management companies (TMCs) and corporate travel agents, Way2Go offers an end-to-end and online solution that manages multiple requests coming from their corporates with ease. It provides the best global content of their choice with the best rates for their booking. Mid office/back office automation and real time analytics insights allow TMCs and travel agents to focus on their core business of selling more.

Wipro Way2Go – a one-stop travel offering for travel management companies:



Figure 1: Solution overview



Key benefits



Satisfied corporates:

The platform offers a seamless experience to business travelers for booking flights, accommodation and ground transportation. Apart from easy travel request fulfillment and paperless expense settlement, it allows users to set travel preferences and receive notifications. The platform offers a flexible approval and rule engine to integrate corporate specific travel & expense (T&E) policies.



Content of choice with better negotiated rates:

Wipro Way2Go provides global travel content of your choice from a variety of sources including directly from the suppliers.



Cost optimization:

Back-office automation allows travel agencies to eliminate manual, time-consuming processes that once divided an agent's attention from interacting with and positioning the right products to the right customer. Hosted on the Cloud, Wipro Way2Go does not require any investment for physical infrastructure and maintenance, thereby reducing the overall cost. The powerful analytics module reveals interesting insights for direct cost savings – such as vendor heat maps.



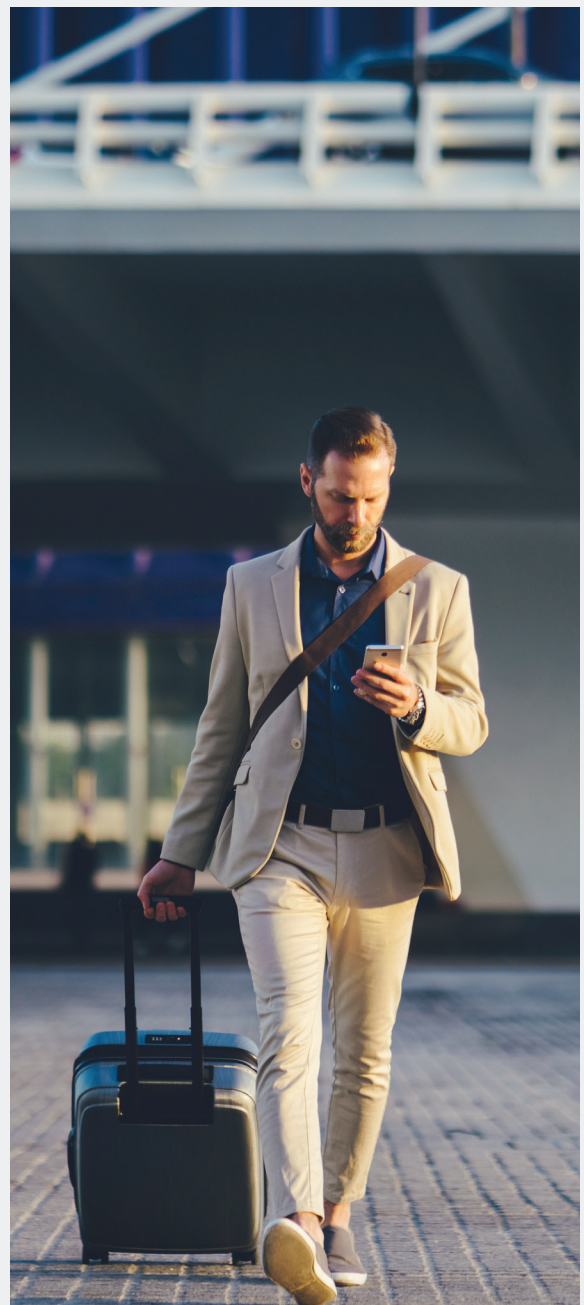
Valuable insights:

Wipro Way2Go's advanced analytics provides enhanced visibility into overall travel and accommodation costs and trends. Data can be drilled down to the finest level for smart decision-making and effective spend planning. It also leverages prescriptive analytics to identify the likelihood of future outcomes based on historical data.



Hassle-free one-stop solution:

Way2Go offers an end-to-end solution to travel management companies through online booking tools for agents as well as their corporate clients. Further, content management, back-office/mid-office automation and analytics insights in one single platform help solve the problems faced by TMCs.



Key features

Online booking tool

- Single sign on: Corporate
- Real time online and offline bookings
- End to end travel policy implementation
- Corporate self-onboarding
- Multi-level approval
- Corporate profiling

How it helps:

- End-to-end solution
- Reduced processing time
- Easy client onboarding
- Convenience
- Compliance

Marketplace

- Multiple vendors, partners, suppliers' integration
- GDSs, LCCs, NDCs, consolidators, aggregators, etc.
- API management
- Curated content
- Caching

How it helps:

- Ease of search, quote, book and confirm
- Better content and rates
- One screen to have all fares - Retail fares, private fares, branded fares, etc.
- Best rate
- Best content

Back-office automation

- Corporate EPR, HRMS
- Real time invoicing: Immediate GST compliant invoice, credit note, refunds etc.
- Online payment gateway
- Sales and supplier fee management

How it helps:

- Easy operation
- Reduced travel processing cycle
- Cost saving

Compliance

- PCI DSS, GDPR, GST
- 24/7 support and maintenance

How it helps:

- Increased footprint and competitive edge

Analytics

- Comprehensive TMC dashboard
- Complete business intelligence dashboard
- Corporate sales report
- Supplier reconciliation report
- Real-time insights

How it helps:

- Comprehensive analytics of clients in a single view
- Evaluate performance: Staff, agency and clients

White label solution

- Published under your corporate identity
- Mobile app
- Website

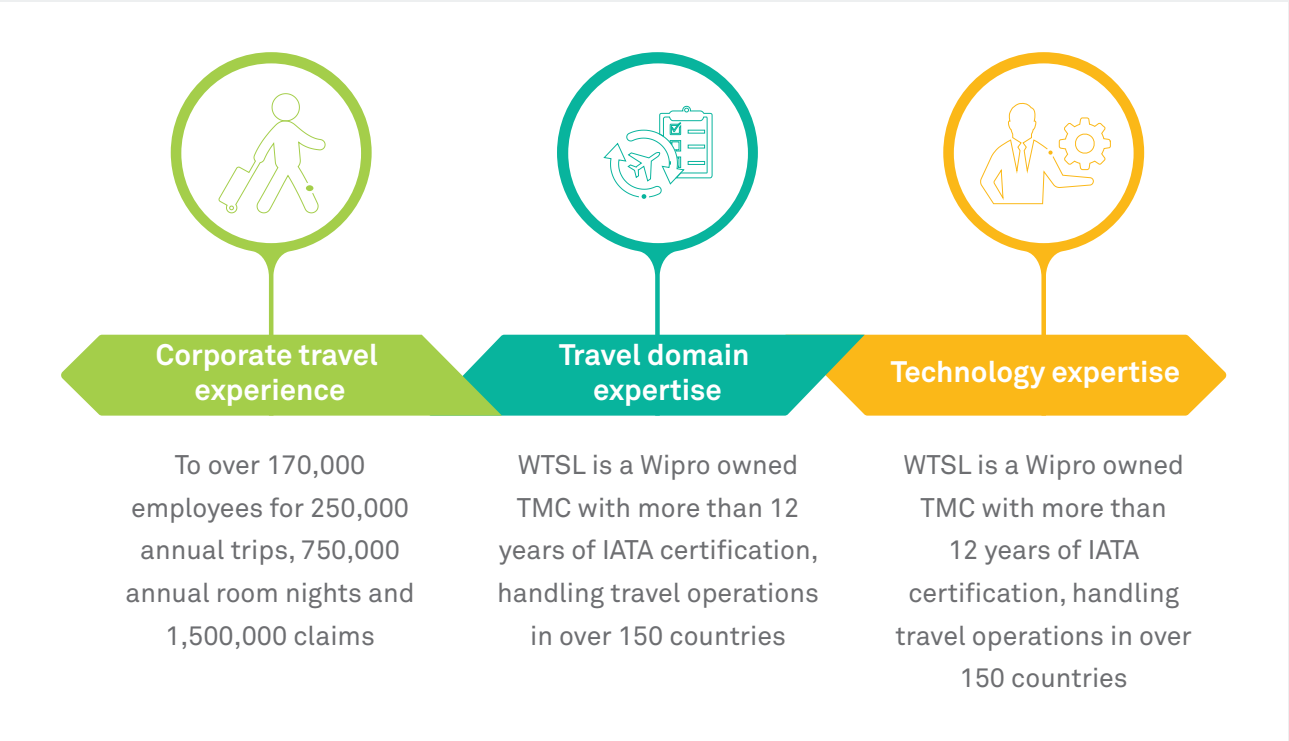
How it helps:

- Brand promotion
- Better visibility in market
- More customers

What differentiates us?

Wipro is a globally recognized IT company handling its own massive travel and expense management requirements. Wipro's expertise and experience has enabled us to offer digital T&E including:

Wipro Way2Go is a one-stop solution for travel requirements of corporates and travel management companies.



Years of experience and expertise = Effective outcomes delivery

Corporate travel experience



Travel domain expertise



Technology expertise



**Wipro Limited**

Doddakannelli, Sarjapur Road,
Bangalore-560 035,
India

Tel: +91 (80) 2844 0011

Fax: +91 (80) 2844 0256

wipro.com



Wipro Limited (NYSE: WIT, BSE: 507685, NSE: WIPRO) is a leading global information technology, consulting and business process services company. We harness the power of cognitive computing, hyper-automation, robotics, cloud, analytics and emerging technologies to help our clients adapt to the digital world and make them successful. A company recognized globally for its comprehensive portfolio of services, strong commitment to sustainability and good corporate citizenship, we have over 175,000 dedicated employees serving clients across six continents. Together, we discover ideas and connect the dots to build a better and a bold new future.

For more information,
please write to us at
info@wipro.com

