



**Wipro's Destination Cloud solution**  
Accelerate your journey from legacy/on-premise CRM to Microsoft Dynamics 365 cloud

## Introduction

The COVID-19 crisis has underlined the limitations of legacy/on-premise CRM solutions because of issues in accessibility, availability and scalability. Organizations want to move to Dynamics 365 Cloud to overcome these issues. The upgrade process can be daunting without the knowledge of right tools, frameworks and best practices.

## The solution

Wipro's Destination Cloud solution mitigates and accelerates this journey to Dynamics 365 Cloud from your existing CRM systems such as Siebel, MS CRM 20XX, SFDC, Clarify or locally developed CRM solution.

**Accelerate your journey to Dynamics 365 Cloud with Wipro's Destination Cloud solution utilizing Wipro's world class delivery model**

## Why Destination Cloud?

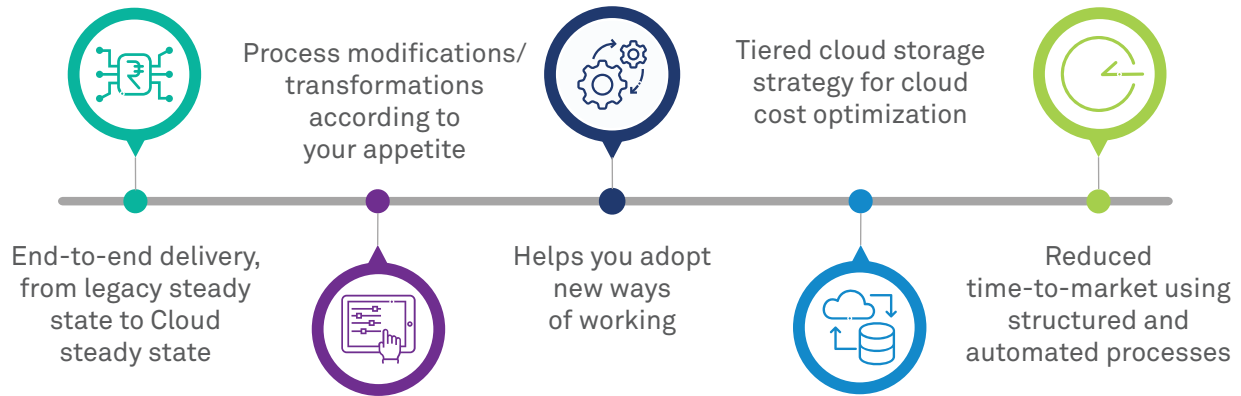
-  Holistic approach for pre-upgrade, upgrade and post-upgrade phases
-  Upgrade frameworks to ensure success
-  Right strategy, tools and accelerators for data migration
-  Leverages Agile DevOps for delivery

## Key benefits

Wipro's Destination Cloud solution can help accelerate your journey to the Dynamics 365 Cloud. We offer innovative solutions to upgrade functionality, migrate data, map users, and optimize

storage for attachments. We also have structured processes for delivery, best practices and lessons learnt from years of successful upgrades.

## Our value proposition:



## Features

Wipro's Destination Cloud solution consists of upgrade frameworks, upgrade analyzer tools, data migration tool, accelerators, best practices, and

templates spanning the entire gamut of pre-upgrade, upgrade and post-upgrade phases.

Our delivery approach welcomes process modification/transformation depending on customer's change appetite

Multi-threaded, load balanced data migration tool for efficient data movement

CI/C pipeline orchestration



Upgrades analyzer tool giving detailed reports of changes required

Siebel to Dynamics 365, SFDC to Dynamics 365 and CRM 20xx to Dynamics 365 upgrade frameworks and tools

**Helping customers rapidly upgrade to dynamics 365 Cloud without compromising on data, functionality and security**

### Wipro Limited

Doddakannelli,  
sarjapur Road,  
Bangalore-560 035,  
India

Tel: +91(80) 28440011  
Fax: +91 (80) 28440256  
**Wipro.com**

Wipro Limited (NYSE: WIT, BSE: 507685, NSE: WIPRO) is a leading global information technology, consulting and business process services company. We harness the power of cognitive computing, hyper-automation, robotics, cloud, analytics and emerging technologies to help our clients adapt to the digital world and make them successful. A company recognized globally for its comprehensive portfolio of services,

strong commitment to sustainability and good corporate citizenship, we have a dedicated workforce of over 175,000, serving clients across six continents. Together, we discover ideas and connect the dots to build a better and a bold new future.

For more information, please write to us at [info@wipro.com](mailto:info@wipro.com)