



# SAP HANA as a Service

Wipro, Hewlett Packard Enterprise and Equinix collaborate to seamlessly transform your IT infrastructure into a real-time enterprise



# Real-time enterprises are all about data

Today's powerful digital technologies are rewriting existing business models. These technologies create new revenue and value-generating opportunities, offering your business the necessary competitive advantage and ability to march forward quickly.

At the heart of this change is data, generated from new sources and at greater volumes than ever before. The digital revolution demands real-time insights from data. And your ability to manage and use this data with agility to deliver better customer experiences will impact your business. Enterprises that tap into real-time data delivery make intelligent decisions based on it and translate these decisions into actions. And that is why intelligent enterprises are turning towards data platforms that bring transactions and analytics together to make instantaneous insight a reality.

SAP HANA does just that. It leverages in-memory data processing for real-time data access and advanced analytic capabilities to bring significant benefits for your enterprise. However, to take full advantage of SAP HANA, you must first replace existing databases, implement servers built for in-memory computing to transition without disruption.

The next-generation enterprise resource planning (S/4HANA) and SAP Business Warehouse (BW/4HANA) are required to run on SAP HANA. However, there are no new features available for software running on third-party databases. In addition, SAP will discontinue support for third-party databases after 2027.

## The solution

SAP HANA as a Service, a joint solution from Wipro, Hewlett Packard Enterprise and Equinix, addresses these challenges. This solution combines the Intellectual Property (IP), service offering and Center of Excellence (CoE) from Wipro and a complete set of solutions and services from Hewlett Packard Enterprise with SAP HANA Tailored Data Center Integration (TDI) configurations and HPE base configurations to create new possibilities for your business. Equinix provides world class, industry compliant data center and interconnection services that give businesses the power to create and leverage infrastructure already securely connected to thousands of technology ecosystem partners, including major hyperscalers.



## Benefits

**The collaboration between Wipro, Hewlett Packard Enterprise, and Equinix propels your business with these proven benefits:**

- Offers the highest scalability for SAP HANA environments in the industry, making these environments simpler to install and manage
- Provides system configuration and deployment automation through HPE OneView and Wipro ASPIRE FluidIT blueprint
- Offers operations and sustenance workflow automation resulting in reduced time and effort while optimizing ROI
- Delivers a shift from CapEx to a consumption model resulting in flexible and faster time to market
- Offers a robust solution from Hewlett Packard Enterprise – one of the market leaders in SAP HANA technology offerings and a system integrator partner with years of experience in deploying and managing SAP HANA environments
- Enables lowest latency connections to various cloud service providers via a hybrid environment with secure workloads deployed on Platform Equinix, offering greater efficiencies and cost savings
- Enables scalable bandwidth to manage high-density workloads and voluminous data, with resilience against dynamic demands with a flexible infrastructure

# Features

The SAP HANA as-a-service solution from Wipro, Hewlett Packard Enterprise, and Equinix helps you:



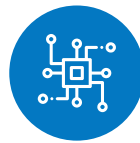
Automate your SAP HANA deployments leveraging HPE infrastructure offerings for SAP HANA based on HPE OneView and Wipro FluidIT automation engine – Wipro ASPIRE and Wipro Service Theater



Integrate with infrastructure defined by HPE software and SAP Basis Layer



Enable a fully managed SAP HANA as-a-service to gain the flexibility to shift to an on-premises public cloud experience using the HPE GreenLake consumption model



Enable deployment automation and system configuration leveraging HPE OneView and Wipro ASPIRE



Manage the operational automation aspects such as workflow automation of SAP system copy, high-availability/disaster recovery (HA/DR) failover automation, and SAP HANA infrastructure lifecycle maintenance



Enable faster on-ramps with flexible interconnection with myriad cloud service providers, to accelerate SAP HANA migration to hybrid/multicloud architectures

## Key takeaways

- SAP HANA as a Service, a joint solution from Wipro with HPE Greenlake and Equinix offers public cloud-like experience in the privacy of a dedicated hosted data
- Get the simplicity, agility and economics of public cloud combined with the security and performance benefits of on-premise IT
- A powerful, outcome-driven solution based on a pay-per-use consumption model to unleash the full potential of your data



**Ambitions Realized.**

---

**Wipro Limited**  
Doddakannelli  
Sarjapur Road  
Bengaluru – 560 035  
India

Tel: +91 (80) 2844 0011  
Fax: +91 (80) 2844 0256  
**wipro.com**

Wipro Limited (NYSE: WIT, BSE: 507685, NSE: WIPRO) is a leading technology services and consulting company focused on building innovative solutions that address clients' most complex digital transformation needs. Leveraging our holistic portfolio of capabilities in consulting, design, engineering, and operations, we help clients realize their boldest ambitions

and build future-ready, sustainable businesses. With over 240,000 employees and business partners across 66 countries, we deliver on the promise of helping our customers, colleagues, and communities thrive in an ever-changing world.

For more information,  
please write to us at **info@wipro.com**