



**Wipro's #WANFreedom:  
Empowering enterprises  
to leverage connected  
opportunities**

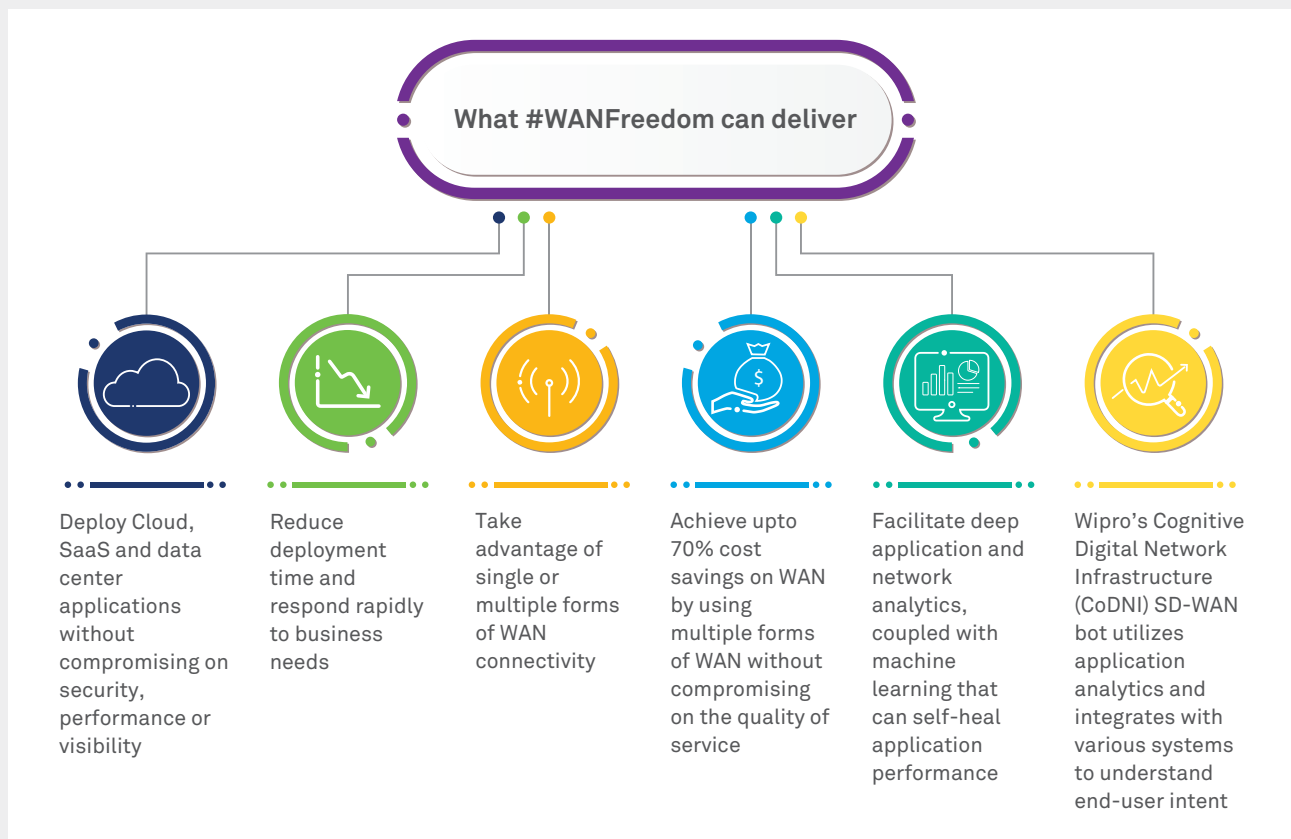


As modern workforces become increasingly mobile, ensuring availability of business-critical applications across multiple Clouds is crucial. However, traditional WAN architecture fails to meet the needs of dynamic businesses, given the high bandwidth costs, limited security and ever-increasing complexity. A Software-Defined

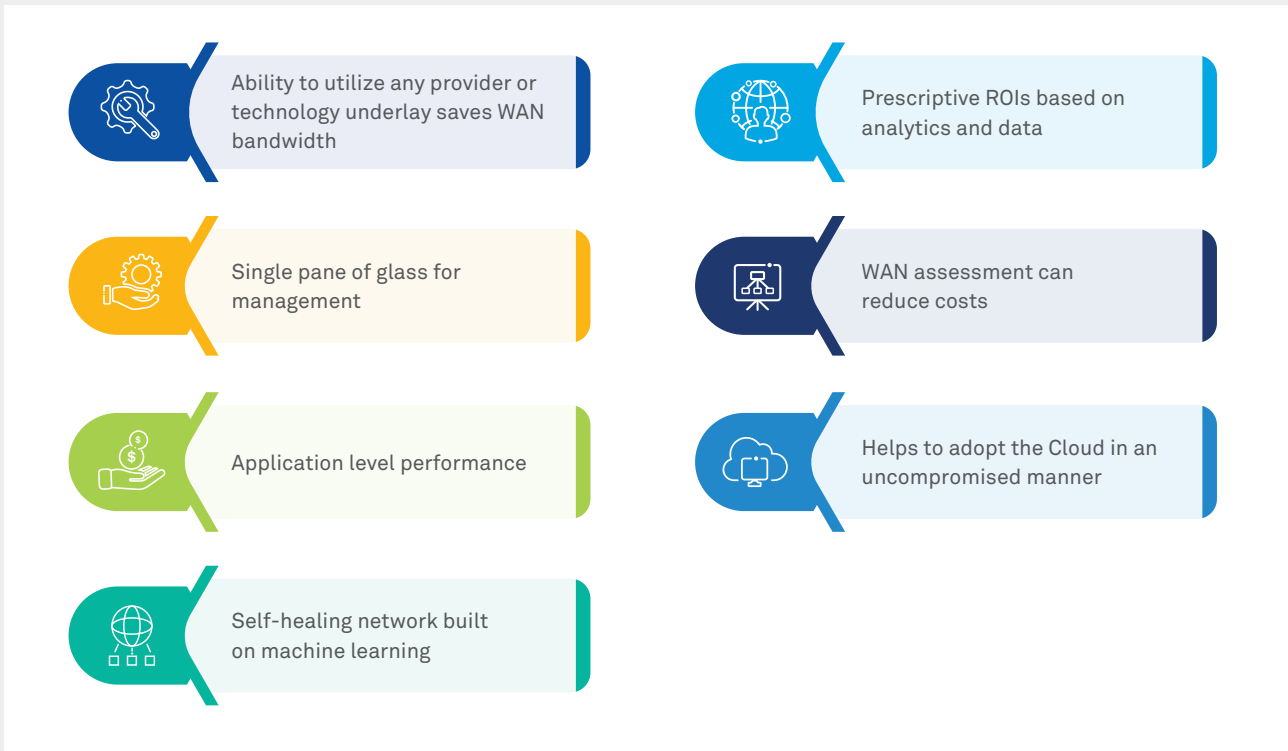
Wide Area Network (SD-WAN) that leverages a centralized control function can securely direct traffic across the WAN. This empowers enterprises to take advantage of MPLS, LTE and broadband internet services to securely connect users to applications.

Traditional WAN	Software Defined WAN
Proven scalability and resiliency	SD-WAN is built on top of the scale and resilience of WAN
Box-by-box configuration and management approach for WAN links <ul style="list-style-type: none"> <li>• Time consuming</li> <li>• Non-uniform WAN policies</li> </ul>	Centralized controller for configuration and management of WAN links <ul style="list-style-type: none"> <li>• Reduced time</li> <li>• Uniform WAN policies</li> </ul>
Multiple tools and products for <ul style="list-style-type: none"> <li>• Provisioning and policy management</li> <li>• Application visibility and diagnostics</li> <li>• Traffic analytics</li> </ul>	Single pane of glass for all requirements
Unpredictable application performance due to packet centric approach for traffic forwarding	Application centric approach to traffic forwarding ensures predictable application performance

### The solution: Wipro's #WANFreedom, powered by Cisco SD-WAN



## The key features of #WANFreedom



Wipro's #WANFreedom, powered by industry leading SD-WAN solution from Cisco, comprises of Wipro's comprehensive life-cycle services (Figure1), along with powerful Cisco SD-WAN

components, which delivers network automation, simplification of operations, provisioning, monitoring and troubleshooting.

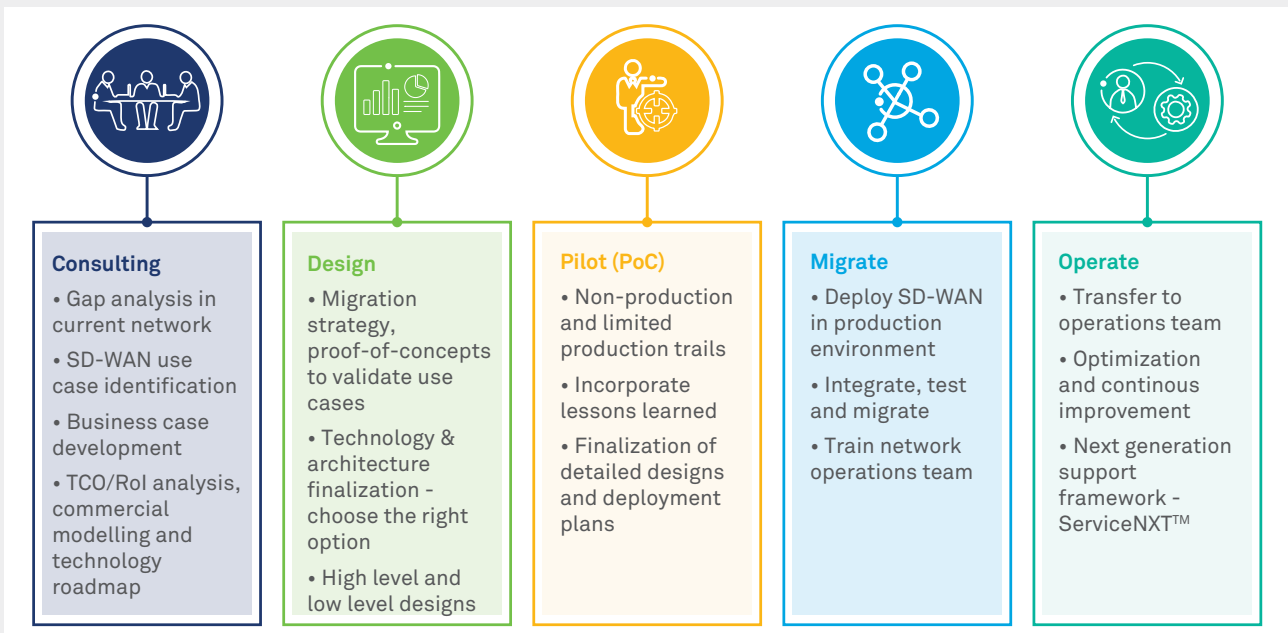


Figure 1: Wipro's comprehensive life-cycle services

## Underpinned by Cisco Viptela architecture

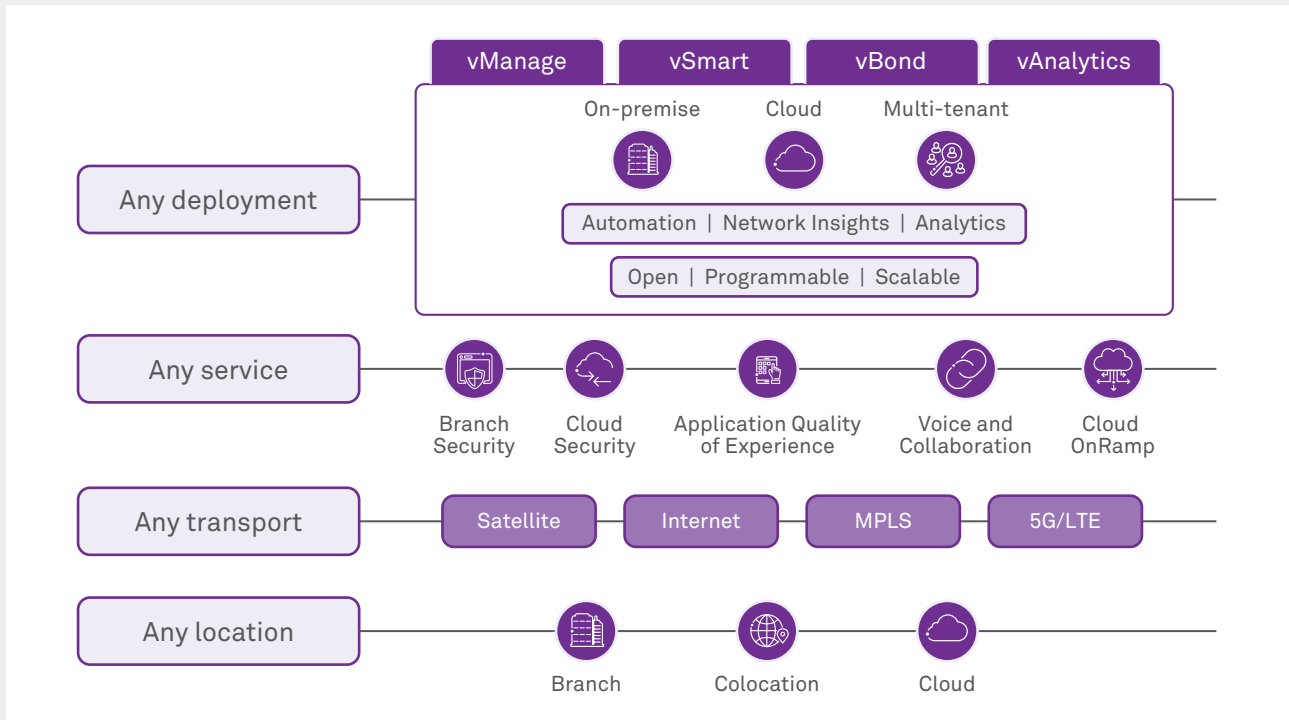


Figure 2: Secure Cloud scale SD-WAN architecture

Cisco SD-WAN solution with Viptela is a centrally managed, orchestrated and operated solution with Cloud-hosted Cisco vManage - GUI management and provisioning platform, vSmart controller and vBond orchestration layer at the heart of the solution.

The various components of Cisco SDWAN by Viptela include:

**vSmart Controllers:** The centralized intelligence systems of the solution that implement policies and connectivity between SD-WAN branches.

**vBond Orchestrator:** Facilitates the initial bring-up by performing authentication and authorization of all elements into the network.

**Cisco vManage:** Manages the entire solution and is Cisco's GUI based centralized management and provisioning platform for day 0, day 1 and day n+ for the entire Cisco SD-WAN infrastructure.

**Cisco vAnalytics:** Provides graphical representations for the performance of the entire Viptela overlay network, and helps to drill down to the characteristics of a single carrier, tunnel, or application at a particular time.



## The Wipro edge



**25 year strong 360-degree strategic partnership with Cisco:** Wipro is a global Gold certified partner and a recognized SD-WAN Managed Secure Services partner with Cisco.



**Wipro SDx CoE lab:** Wipro's SDx (Software defined Everything) Centre of Excellence(CoE) helps build, test and validate reference architectures, custom integrations and implementation methodologies for multiple enterprise requirements. The SDx CoE is a launch pad for showcasing customer use cases, validating and demonstrating the use cases of SD-WAN.



**Competency and skills:** Wipro leverages capabilities of more than 4,000 network engineers who are process trained, certified and technically skilled in SDx academy, part of the SDx CoE that supports the training and skill enablement for the SD-WAN specific delivery.



**Proven experience in global project delivery:** Dedicated organizational structure for system integration project delivery with a track record of more than 50 DC infrastructure and WAN migrations and consolidations globally.



**Next-generation managed services:** Wipro's ServiceNXT™ platform provides end-to-end integrated IT management.

● **Wipro Limited**

Doddakannelli, Sarjapur Road,  
Bangalore-560 035,  
India

Tel: +91 (80) 2844 0011

Fax: +91 (80) 2844 0256

**wipro.com**

Wipro Limited (NYSE: WIT, BSE: 507685, NSE: WIPRO) is a leading global information technology, consulting and business process services company. We harness the power of cognitive computing, hyper-automation, robotics, cloud, analytics and emerging technologies to help our clients adapt to the digital world and make them successful. A company recognized globally for its comprehensive portfolio of services, strong commitment to sustainability and good corporate citizenship, we have over 175,000 dedicated employees serving clients across six continents. Together, we discover ideas and connect the dots to build a better and a bold new future.

For more information,  
please write to us at  
**info@wipro.com**

