

# Wipro Predictive Risk Intelligence Manager (PRIM)

Capture, identify and report complex risks  
before they escalate into catastrophic events



## Introduction

Given the complex and risky nature of business environment in some industries, such as chemical manufacturing, oil & gas, mining, and utilities, there is a need to keep a balance between running operations and replacing aging equipment, safeguarding the health and safety of employees, and complying with HSSE standards.

Traditional incident investigation models do not capture collective trends or correlate multiple minor risks within the operations.

Currently available systems provide historical analysis and views on individual risks, but do not help to look at the data collectively.

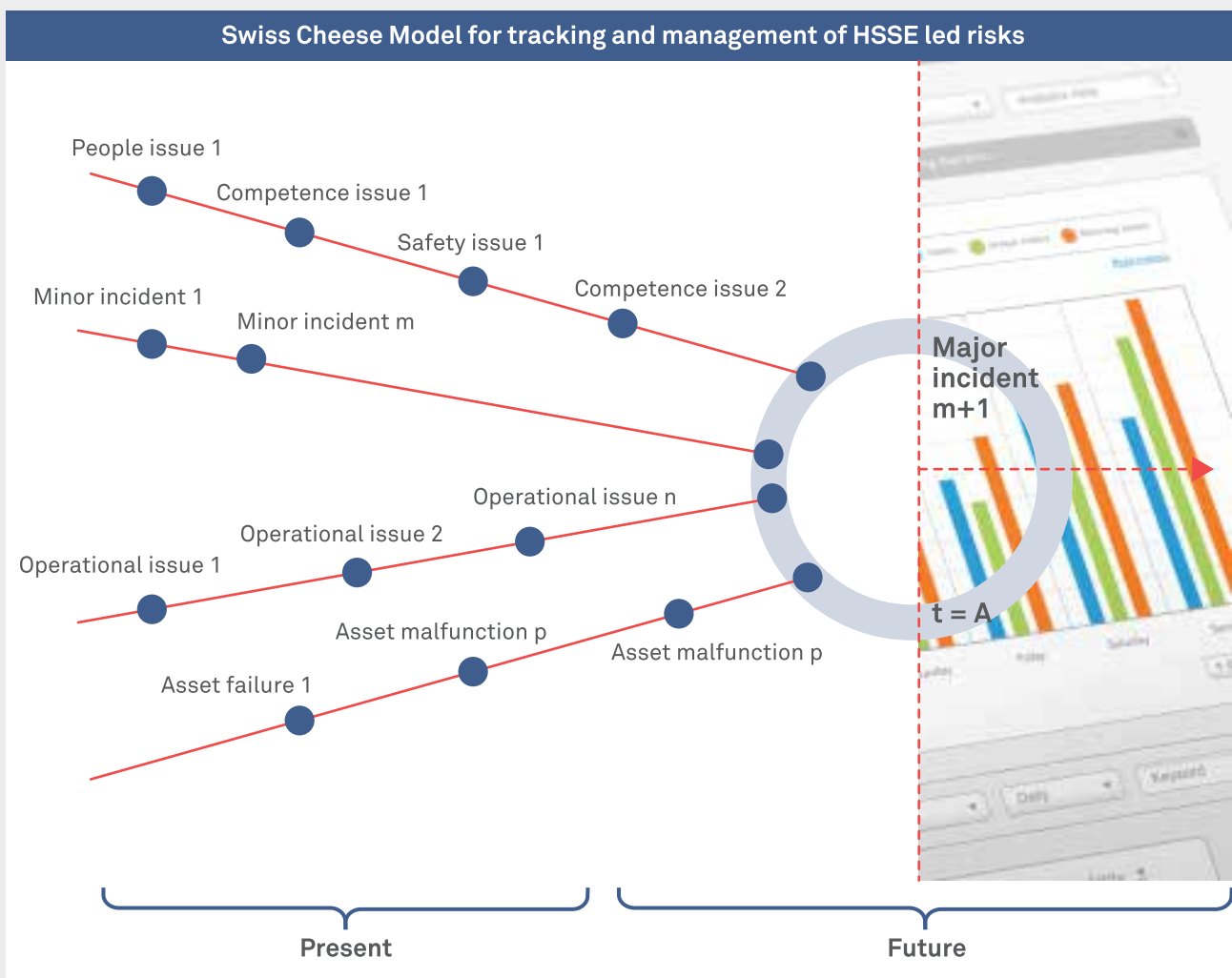
Wipro's business intelligence solution for HSSE risk management, Predictive Risk Intelligence Manager (PRIM) offers collective trending data. PRIM uses leading indicators in the areas of occupational health and safety, process safety, competence and training led risk, asset safety, and incident safety to enable risk identification, assessment and aggregation for an organization spread across multiple facilities and locations.



## PRIM solution framework

- A pre-built KPI repository built on emerging HSSE standards and industry leading studies conducted on HSSE risk reduction in global enterprises
- A library of business rules related to various areas of HSSE based on the PRIM data model
- A future proof HSSE data model to evaluate and measure emerging risks in key areas such as asset risk, competence risk, process safety, environmental risk, and incident management
- Global partnership and implementation capability in industry leading business intelligence and analytics platforms
- Data management and HSSE managed services for managing complex data collection and ETL scenarios required for risk intelligence
- An intuitive dashboard interface providing quick visibility to high risk SOPs and vulnerable sites

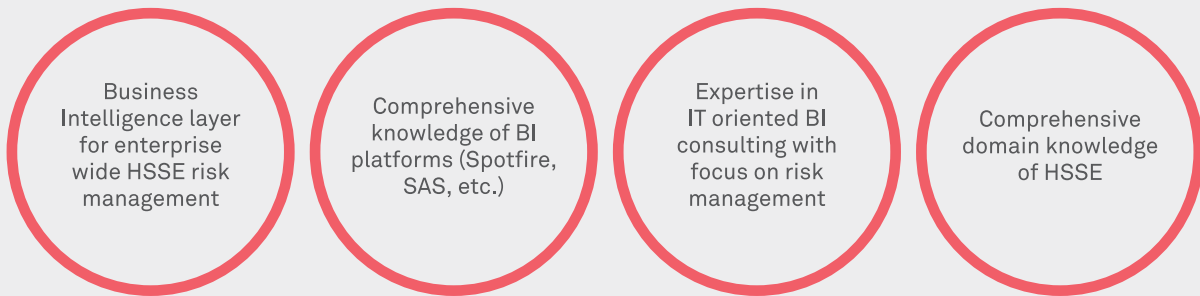
## Drivers for risk intelligence and analysis



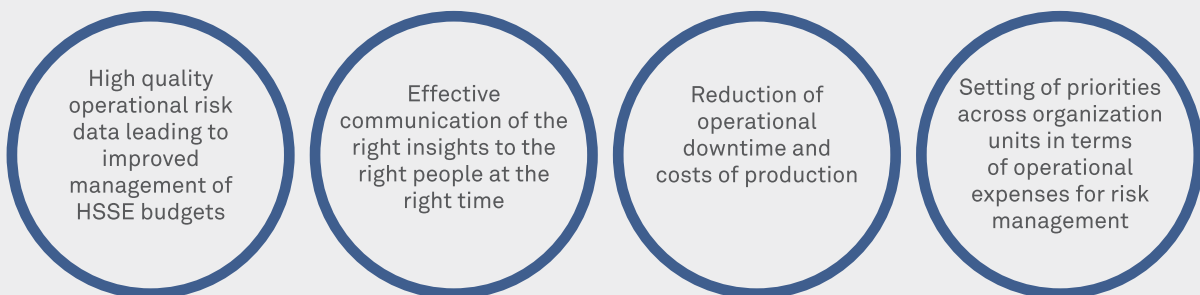
## PRIM key performance indicators

Asset safety	Occupational health and safety (OHS)	Process safety	Competency and training risk
Asset inspection completion index	OHS inspection completion index	Safety training effectiveness index	Competency fulfillment index
Equipment preventive maintenance completion index	Near miss action item closure index	Process hazard corrective action	Job churn index
Completion index	OHS inspection action item on-time closure index	Item completion index	Training effectiveness index
Recorded injury rate		Employee safety	
Due to assets		perception index	

## Features



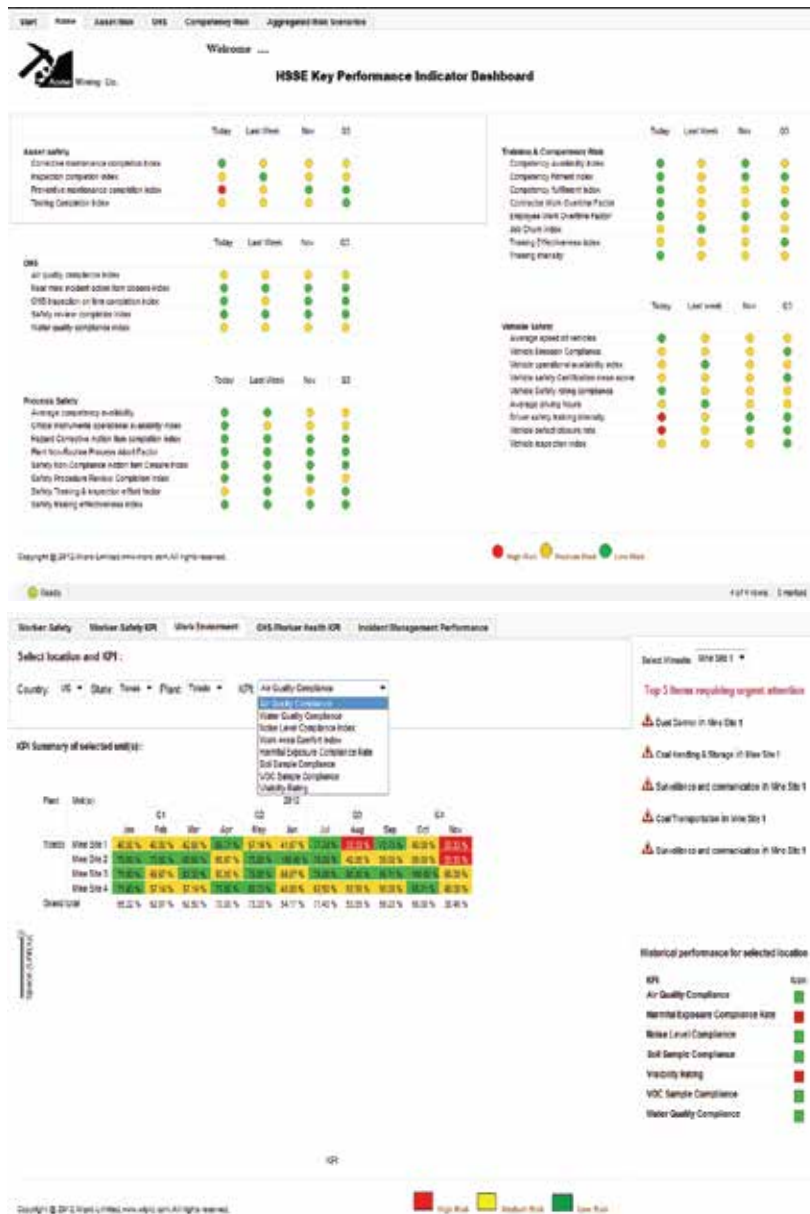
## Benefits







Pre-built KPI repository  
 built on HSSE standards and  
 intuitive dashboard interface  
 for quick visibility to high risk  
 SOPs and sites



● **Wipro Limited**

Doddakannelli, Sarjapur Road,  
Bangalore-560 035,  
India

Tel: +91 (80) 2844 0011

Fax: +91 (80) 2844 0256

**wipro.com**

Wipro Limited (NYSE: WIT, BSE: 507685, NSE: WIPRO) is a leading global information technology, consulting and business process services company. We harness the power of cognitive computing, hyper-automation, robotics, cloud, analytics and emerging technologies to help our clients adapt to the digital world and make them successful. A company recognized globally for its comprehensive portfolio of services, strong commitment to sustainability and good corporate citizenship, we have over 160,000 dedicated employees serving clients across six continents. Together, we discover ideas and connect the dots to build a better and a bold new future.

For more information,  
please write to us at  
**info@wipro.com**

