

Wipro Energy Trading and Risk Management (ETRM) services

Value maximization through best in class talent, practices and client partnership



Commodity trading firms have experienced significant changes in the recent years. Business drivers such as new energy sources, extended regulatory and compliance measures, geo political situations, operational efficiency and optimizations, trading opportunities and ever improving technology advancement are some of the important factors making the ETRM industry very dynamic. With the changing industry

scenario, clients in the industry are using ETRM systems to help them tackle regulatory compliance, reduce risk coverage and speed up trading activities.

Wipro's vision is **to earn our clients' trust and maximize value of their businesses by providing solutions that integrate deep industry insights, leading technologies and best in class execution.**

Wipro's ETRM strategy

Modernize the 'core' (run)

- Cost optimization through hyper automation
- Simplify legacy systems; reduce overhead
- Drive scalability and performance improvement
- Integrated IT and ops solutions
- Partnership model, joint ownership

Drive the 'future' (change)

- Digital transformation
- Drive non – linearity
- Domain and technology innovation ecosystem
- Invest in future tech – Automation, BlockChain, IoT, Cloud migration, open stack, and people

Service offerings

Wipro has been serving clients in the ETRM industry since 2007. Wipro's dedicated ETRM practice is spread across the globe helping clients in business and their digital transformation journey. Wipro enables businesses in green field implementation or bringing legacy system to the

latest ETRM landscape. Wipro also provides business sustainable support services and digital solutions. Wipro's expertise includes several engagements to provide end to end solutions across all asset classes for a variety of clients across the globe.

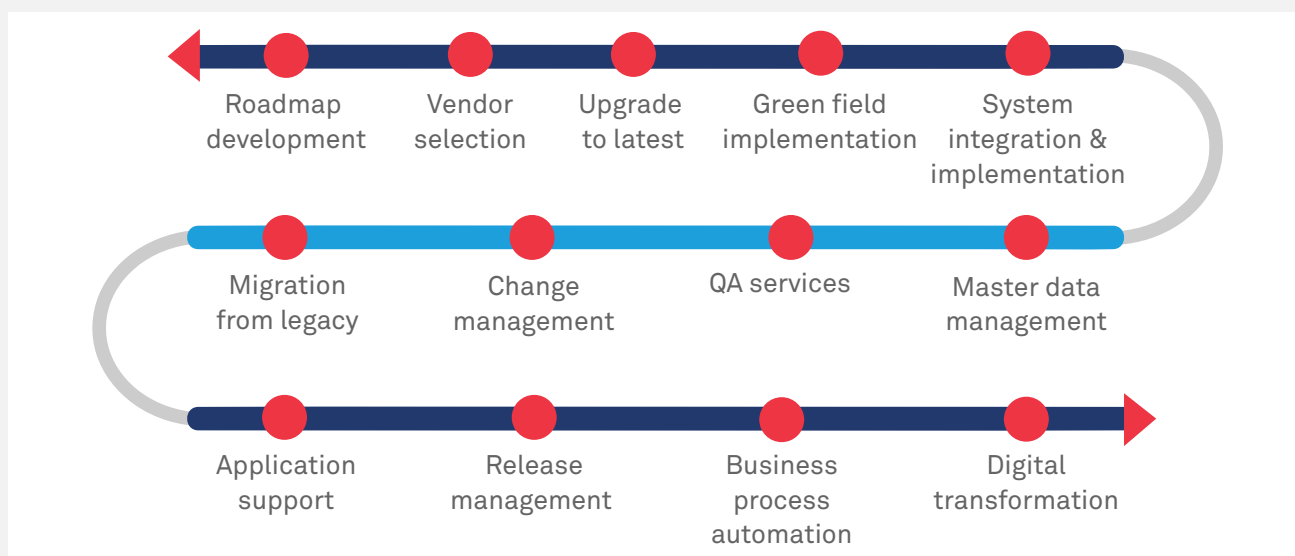


Figure 1: Portfolio of ETRM offerings

Wipro offers a complete range of efficient and cost-effective services in all the areas of ETRM industry ranging from consulting & advisory,

business transformation, IT services, managed services, digital solution, etc. across every facet of the ETRM industry.

Wipro ETRM solution framework

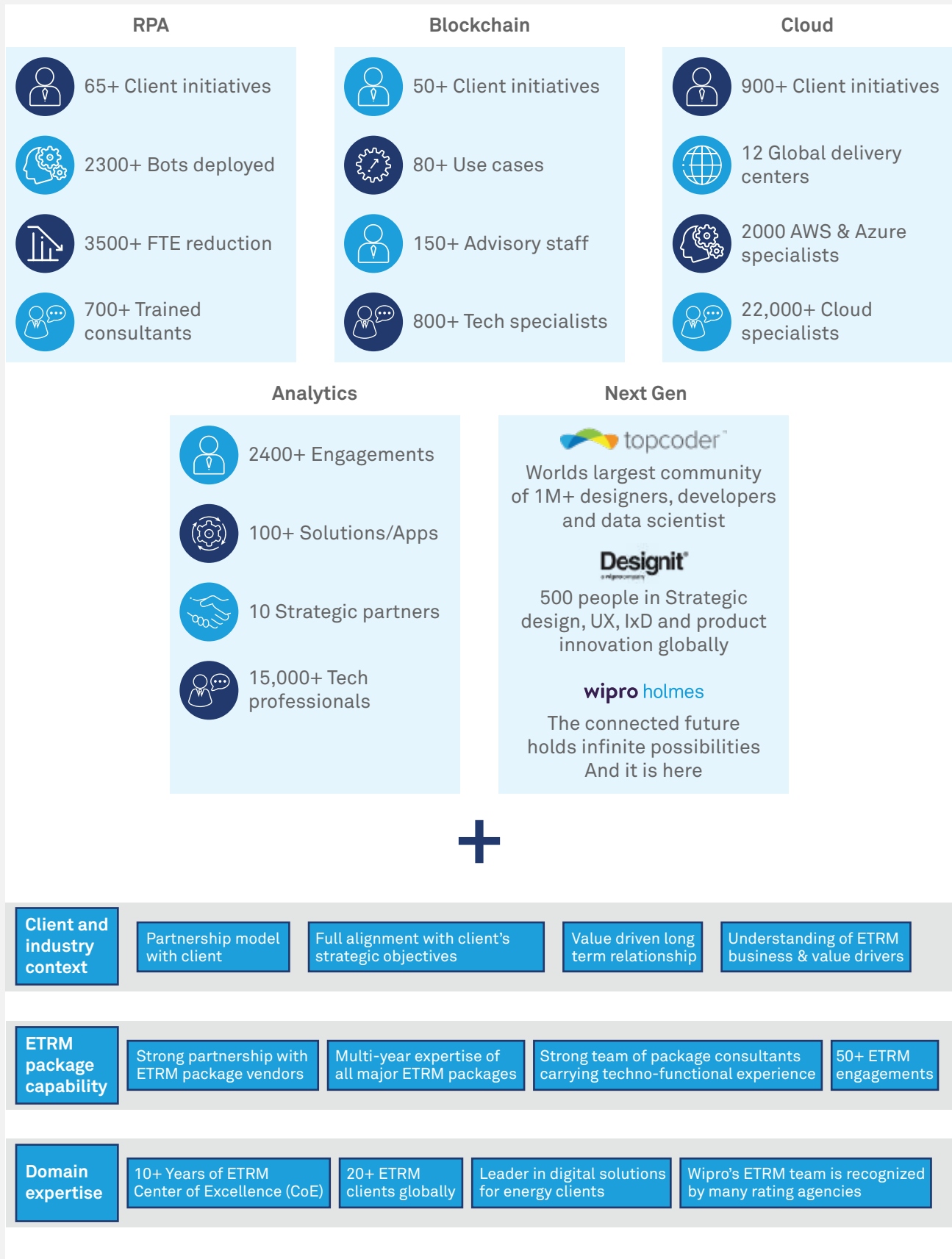


Figure 2: Wipro ETRM solution framework

Energy & commodities: Services offered



Figure 3: Services offered in energy and commodities

Wipro-360° partnership

Wipro has long term and strong partnerships with package vendors, technology leaders and industry consortium in order to stay ahead in the market.

Wipro's 360-degree partnership model is a win-win proposition for our clients and partners with its well defined benefits.



Figure 4: 360° partnership for well defined benefits

Long term partnership with package vendors, technology leaders and industry consortium to stay ahead in the market

Success stories

Category: IT transformation

Client background	Client challenges	Solution offered
The largest energy retailer (electricity and gas) in Northern Ireland market	The drivers for transformation were market reforms and aged legacy business / IT processes	Wipro enabled an end to end greenfield implementation of a full route to market program of Openlink Endur V15 to meet the regulatory requirements of the client
A major UK based utility company based	Client needed a bespoke application to manage physical notifications, bid offer data submissions, ramping calculations	Acted as solution partner in the ISEM program. Wipro developed and enhanced existing systems for power operations. Wipro also developed interface to and from ABB's nMarket system which is used for market communications with the central systems

Category: Managed services

Client background	Client challenges	Solution offered
European utility with a global commodity trading business based in Germany	Client was looking to partner with a third party supplier to provide application support across its trading BU for its trading applications	Wipro provided 2nd and 3rd line support for each of their instances of OpenLink Endur, application support for various applications and systems
British multinational bank and financial services company headquartered in London	Client needed to enhance the EOD performance and had requirements of implementation of new feeds to downstream systems	Designed and implemented EOD optimization using standard practices. Supporting and enhancing Endur , RightAngle and 2 other peripheral systems across London, Singapore, US and India

Category: Digital transformation

Client background	Client challenges	Solution offered
LNG partner of major European utility company	Ability to monitor LNG stations, manage their refill demand by choosing from available LNG sellers and arranging the transport	Wipro provided blockchain based single digital platform for the sale and purchase of LNG across different stakeholders. This was a unique solution in itself.
The Energy Web Foundation (EFW) consortium – one of the largest blockchain consortiums with over 50 members specifically designed for the needs of power industry	Wipro has been engaged with a company from the EFW consortium to build a bid/matching algorithm on the EFW Tobalaba blockchain network	Wipro has successfully implemented 2 proof-of-concepts to apply blockchain technology to physical trading. Recently, we won one of the largest energy trading blockchain hackathons beating 57 other companies

Wipro's industry recognitions

Wipro has been recognized in various fields across the globe by esteemed agencies.

<p>Leader – Application Testing 2015, 2016 & 2017</p> <p>Gartner</p> <p>Clients particularly appreciate Wipro's broad portfolio of testing offerings, its vision and thought leadership for the testing services market, its ability to deliver on time, and its use of a global delivery model.</p>	<p>Leader – Managed Services 2018</p> <p>Gartner</p> <p>“Client references praise Wipro for seamless and well-planned transitions that were completed on time, as promised.”</p>	<p>Winner – Energy Operations 2017</p> <p>isg</p> <p>“Wipro has implemented CI/CD deployment pipelines for several of its large clients & also set up complex cloud architectures using its Boundaryless Datacenter Services framework”</p>
<p>Leader for RPA & AI - 2017</p> <p>NelsonHall</p> <p>“Wipro's strength is it's extensive proprietary RPA and AI solutions portfolio, especially with HOLMES for AI”</p>	<p>Winner - Energy Operations 2017</p> <p>ETHISPHERE</p> <p>“Wipro outperform their peers when it comes to promoting ethical business standards and practices both internally and externally”</p>	<p>Leader - Automation in App Dev/Test - 2017</p> <p>Everest Group</p> <p>“Wipro provides an integrated automation solution covering all aspects of application services such as coding, requirements management, testing and project management”</p>
<p>Winner - 'Elevate Texas' Award</p> <p>TEXAS</p> <p>“Wipro is truly a global leader in the IT services industry and a major force in economic development in the State of Texas”</p>	<p>Winner's Circle – Blockchain Services 2017</p> <p>HfS Research</p> <p>Wipro has developed robust scale of 800+ blockchain-proficient resources. It has created blockchain academy that looks into internal and external training & certification.</p>	<p>4.4 out of 5 for Data and Analytics Service</p> <p>Gartner peerinsights</p> <p>“Wipro offshore support staff has been very effective and efficient in getting to know the customer needs and meeting SLA”</p>



Wipro Limited

Doddakannelli, Sarjapur Road,
Bangalore-560 035,
India

Tel: +91 (80) 2844 0011

Fax: +91 (80) 2844 0256

wipro.com

Wipro Limited (NYSE: WIT, BSE: 507685, NSE: WIPRO) is a leading global information technology, consulting and business process services company. We harness the power of cognitive computing, hyper-automation, robotics, cloud, analytics and emerging technologies to help our clients adapt to the digital world and make them successful. A company recognized globally for its comprehensive portfolio of services, strong commitment to sustainability and good corporate citizenship, we have over 160,000 dedicated employees serving clients across six continents. Together, we discover ideas and connect the dots to build a better and a bold new future.

For more information,
please write to us at
info@wipro.com

