

energy



Energy reach

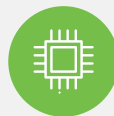
Wipro's pre-configured SAP solution for supply chain processes



Energy Reach, Wipro's pre-configured SAP Solution enables all supply chain processes (procurement, sales, logistics, and core financials) and EAM (Enterprise Asset Management) resulting in reduction of cost to implementation by 50%.

Reduce time and cost to deploy by 50% and lower Total Cost of Ownership

Benefits



Highly integrated financial system:

Facilitates quicker month-end close and timely reporting to all stakeholders



Improved and accurate inventory visibility:

Identifies opportunities for spot sales and realizes higher yields



Quicker and accurate invoicing:

Higher customer satisfaction and faster revenue realization

Benefits



Dynamic scheduling and simulation: Faster response to unplanned events such as delay in vessel availability



System of record for EAM: Better regulatory compliance



Solution on SAP S/4HANA finance: Cutting edge technology to leverage faster process of analytics and reporting needs



Enhanced user experience: Pre-built FIORI/screen personas samples

Features



Infrastructure, SAP, QCI and TMW software licenses for partner managed Cloud as a Service



Business process maps up to L4 level

Integrate oil and gas supply chain management decisions with chain of customers and suppliers



Business configuration sets to fast track implementation time



Accelerators (tools and templates) to fast track the implementation



Project documentation (configuration, training, test scripts, etc.)



Customized executive dashboard for refinery overview with monthly and daily views

Wipro Limited
Doddakannelli, Sarjapur Road,
Bangalore-560 035, India

Tel: +91 (80) 2844 0011
Fax: +91 (80) 2844 0256
wipro.com

Wipro Limited (NYSE: WIT, BSE: 507685, NSE: WIPRO) is a leading global information technology, consulting and business process services company. We harness the power of cognitive computing, hyper-automation, robotics, cloud, analytics and emerging technologies to help our clients adapt to the digital world and make them successful. A company recognized globally for its

comprehensive portfolio of services, strong commitment to sustainability and good corporate citizenship, we have a dedicated workforce of over 170,000, serving clients across six continents. Together, we discover ideas and connect the dots to build a better and a bold new future.

For more information, please write to us at info@wipro.com