



# Table of Contents

---

Introduction: Wading Through the Maze .....	3
The Science Behind the Art of Release Management .....	3
Securing Revenue and Productivity While Managing Cost and Risk .....	4
The Importance of Documentation .....	5
You Get What You Adopt .....	6
About The Author .....	7
About Wipro Ltd. ....	7

## Introduction: Wading Through the Maze

---

Release Management is a practice that oversees the build and delivery of software to its intended user. The practice plays a crucial role in the development, testing and deployment of software into organizations. Put this way, it sounds deceptively simple. But ask software engineers about it and they will tell you that managing software releases is a chaotic, painstaking, time-consuming and often risky endeavor. Errors can be expensive. Worse, poor software documentation can delay effective rectification and hurt business. Amidst capturing the needs of organization and the release of the application, is the tension between the development and production teams. Developers don't have adequate access to production environments, introducing an element of uncertainty in the final product. Naturally, Release Management is becoming an important practice in a bid to ensure improved customer satisfaction and lowered development and business costs. In the fast

moving Energy Trading and Risk Management (ETRM) environment, Release Management becomes the difference between supreme success and dismal disaster.

Energy and Utility companies rely on their ETRM applications 24x7. With changes in the business, competitive and regulatory environments (Federal Energy Regulatory Commission, the Environmental Protection Agency, the Energy Utility Technology Certificate, etc.), ETRM application users have begun to demand, on average, three to six monthly enhancements. In a volatile market, where Utilities need to constantly optimize the energy mix and meet changing regulatory and reporting norms, they need swift turnarounds for application upgrades and changes, without disruption of day-to-day business activity.

## The Science Behind the Art of Release Management

---

This means change management in an ETRM environment must be streamlined, consistent and repeatable. This is true for packaged solutions and, more so, for the scores of customized homegrown applications that Utility ETRM teams typically use.

Most companies have a monthly release calendar – specific dates and times when ETRM application updates are deployed for User Acceptance Testing (UAT) and, thereafter, into each production environment. At this point, developers are actually making changes in the production environment.



# The Importance of Documentation

Utility users depend on their ETRM applications being available round the clock and have low tolerance for down time. Deployment Documentation is central to successful Release Management and to the goals of the ETRM user. Typically required Deployment Documentation is shown here.

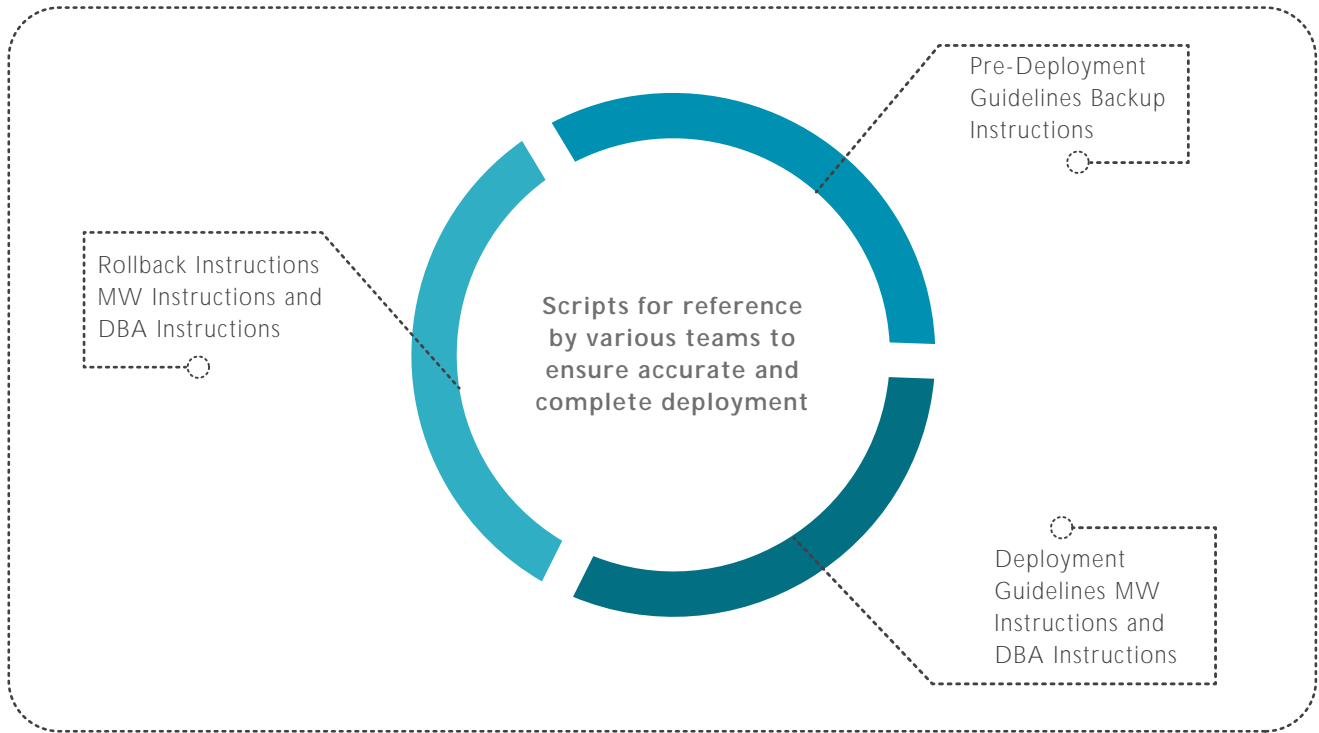


Figure1: Deployment Documentation

## Risk:

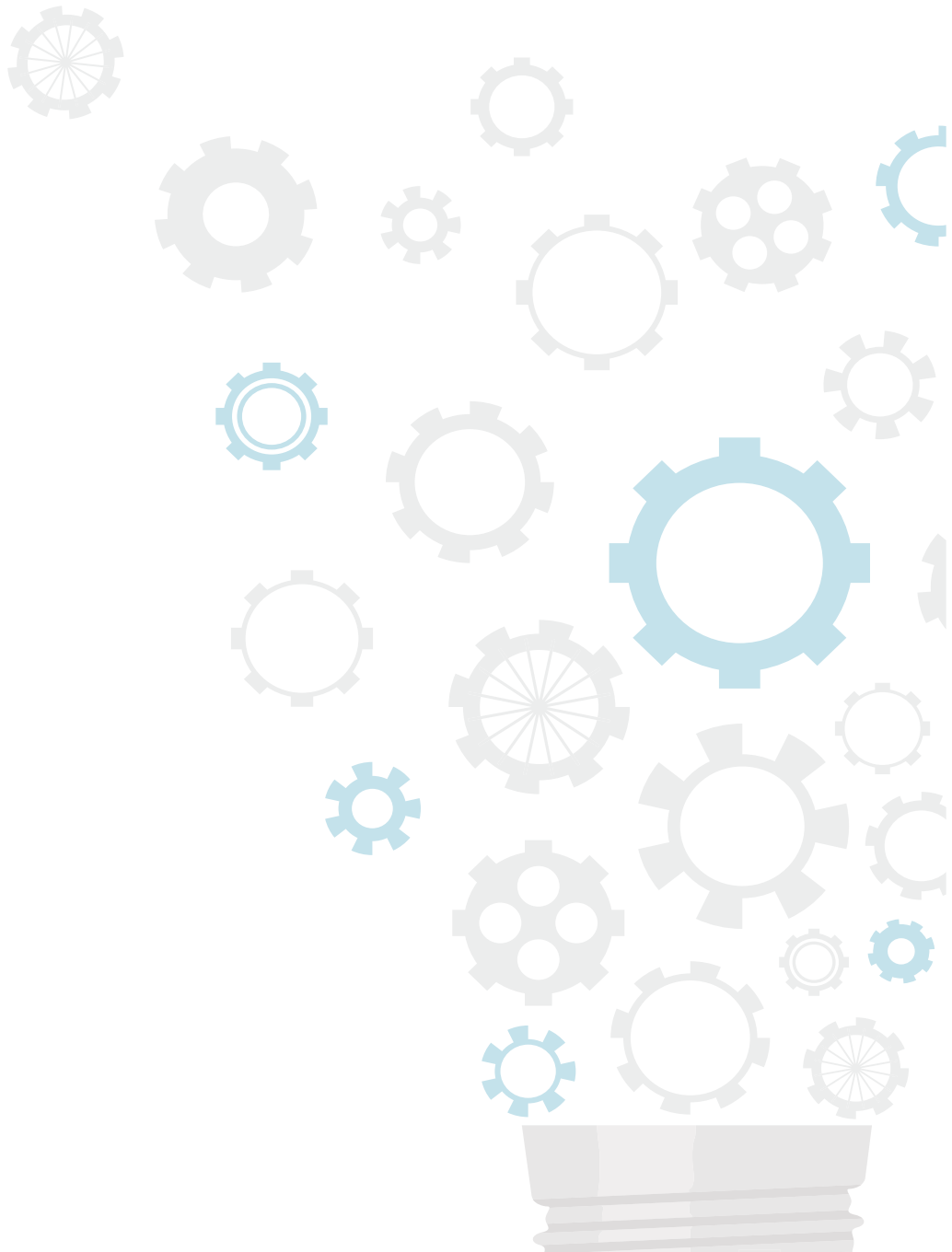
Minimizing risk and failure in an ETRM environment is critical. Can changes be made visible to teams/management before release so that the potential failure can be identified, isolated and rectified? This is a simple but good practice to put in place as part of a Release Management exercise. Similarly, each build must be tested and validated before it is introduced into production. There is always the danger of change requests swamping the development and testing team and introducing

elements of uncertainty. In such instances, it is recommended that the development team frequently builds prototypes for validation by the customer. Risk management also requires that changes be traceable by people, vendors, activities and release dates. With regulations such as Sarbanes-Oxley, this is a fundamental and basic requirement for ETRM organizations. A number of commercially available tools to track and report such changes are available for ready implementation.

## You Get What You Adopt

---

Release management is an important scientific practice that supports software development. ETRM organizations in Utilities can benefit from it if they implement it end-to-end within their environment. This is especially important given that typical Utility organizations who have always been risk averse, could have half a dozen rapid changes required to be made each month to their ETRM applications. The priority needs to be on minimizing financial and compliance risk while bearing in mind that ETRM users cannot afford downtime of their applications. How well a Utility organization responds to these needs is a function of the Release Management practice it adopts.



## About The Author

---

Julie Henson, with over 20 years of experience in supporting technology solutions for trading and risk management applications, supports 34 applications as the L1/L2 points of contact. Over the past six years, she has been managing and providing support for bespoke ETRM applications using an onshore/offshore model. She has played progressive roles such as that of developer, domain architect, business analyst, project manager, support supervisor and change and release manager through software development lifecycles.

She can be reached at: [julie.henson@wipro.com](mailto:julie.henson@wipro.com).

## About Wipro Ltd.

---

Wipro Ltd. (NYSE:WIT) is a leading Information Technology, Consulting and Business Process Services company that delivers solutions to enable its clients do business better. Wipro delivers winning business outcomes through its deep industry experience and a 360 degree view of "Business through Technology" - helping clients create successful and adaptive businesses. A company recognized globally for its comprehensive portfolio of services, a practitioner's approach to delivering innovation, and an organization wide commitment to sustainability, Wipro has a workforce of over 150,000, serving clients in 175+ cities across 6 continents.

For more information, please visit [www.wipro.com](http://www.wipro.com)



## DO BUSINESS BETTER

---

CONSULTING | SYSTEM INTEGRATION | BUSINESS PROCESS SERVICES

---

WIPRO LIMITED, DODDAKANNELLI, SARJAPUR ROAD, BANGALORE - 560 035, INDIA. TEL : +91 (80) 2844 0011, FAX : +91 (80) 2844 0256, Email: [info@wipro.com](mailto:info@wipro.com)  
North America Canada Brazil Mexico Argentina United Kingdom Germany France Switzerland Nordic Region Poland Austria Benelux Portugal Romania Africa Middle East India China Japan Philippines Singapore Malaysia South Korea Australia New Zealand

© WIPRO LTD 2015

"No part of this booklet may be reproduced in any form by any electronic or mechanical means (including photocopying, recording and printing) without permission in writing from the publisher, except for reading and browsing via the world wide web. Users are not permitted to mount this booklet on any network server."