

Real Estate domain and digital practice

Creating a digital culture and delivering digital assurance through 'new ways of working'

Wipro partners with real estate companies to ideate, incubate and deliver digital interventions through cognitive, virtual reality, digital collaborations, Internet of Things (IoT) & Cloud hosted software platforms to help our clients 'Be Digital and Build Digital'.

Re-imagining real estate & property management with digital services to identify new opportunities and process digitalization.

Key takeaways



Digitizing property sales through integration between sales and real estate modules



IoT enabled connected ecosystem



Hyper automation led IT and business process outsourcing



Next-gen technology driven digital facilities management



BIM enabled operations

Key benefits

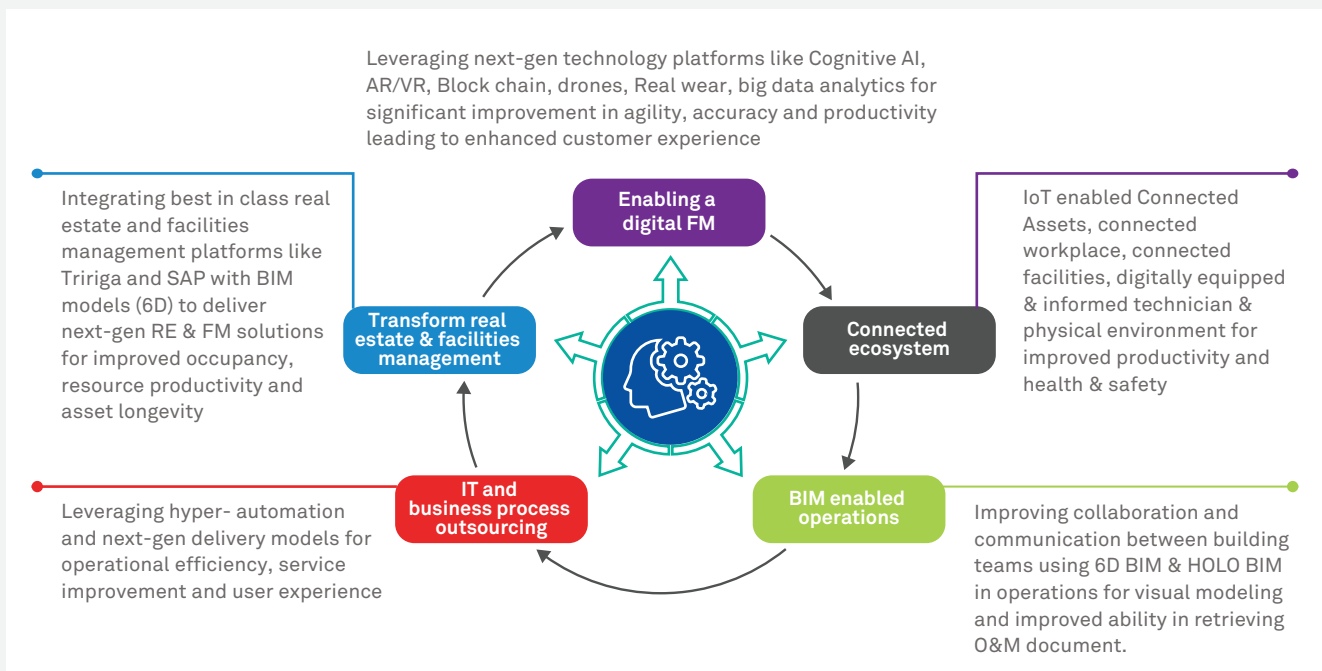
- Reducing costs of operation by simplifying and optimising processes and IT systems across businesses delivering up to 30% savings
- Bringing agility in operations through user centric experience and delivering productivity gains up to 10%

Working with over 30 global engineering, construction and operations clients, bringing in extensive industry knowledge and experts with global experience.

Features

Enabling differentiated & value-added services delivery using:

- Industry domain knowledge and expertise with **global experiences**
- Technology service lines for applications, Cloud, infrastructure, digital, analytics and automation services within **Wipro ecosystem**
- Strategic design and innovation capabilities with **DesignIT**
- Crowdsourcing for unsolved challenges with **Topcoder**
- Cognitive automation with **Wipro Holmes AI Platform**
- Strategic partnership with best-in-class industry specific **technology providers**



Wipro Limited
Doddakannelli, Sarjapur Road,
Bangalore-560 035, India

Tel: +91 (80) 2844 0011
Fax: +91 (80) 2844 0256
wipro.com

Wipro Limited (NYSE: WIT, BSE: 507685, NSE: WIPRO) is a leading global information technology, consulting and business process services company. We harness the power of cognitive computing, hyper-automation, robotics, cloud, analytics and emerging technologies to help our clients adapt to the digital world and make them successful. A company recognized globally for its

comprehensive portfolio of services, strong commitment to sustainability and good corporate citizenship, we have over 175,000 dedicated employees serving clients across six continents. Together, we discover ideas and connect the dots to build a better and a bold new future.

For more information, please write to us at info@wipro.com