

# Electric Powertrain

A pioneering approach to transform the electric powertrain ecosystem

Wipro's electric powertrain solutions maximize reliability, enhance safety, and improve drivability and the user experience. Our distinct ecosystem also enables fast innovation and future-ready design, with a unique combination of a model-based design approach with the Automotive Open System Architecture (AUTOSAR) framework, advanced hardware design, and an integrated electrification package.

Using Wipro's pioneering software control strategies, simulation advancements, algorithms, and global strategic alliances with hardware-in-loop (HIL) and cloud domain partners, OEMs are empowered to design an electric powertrain ecosystem that positions them for the future.

## Key takeaways



Digital solutions and software algorithm that improves Electric Powertrain performance and reduces total cost of ownership



Reliable hardware solutions to cater to the dynamic drivetrain architecture



Adaptable software control algorithm to provide effective torque response

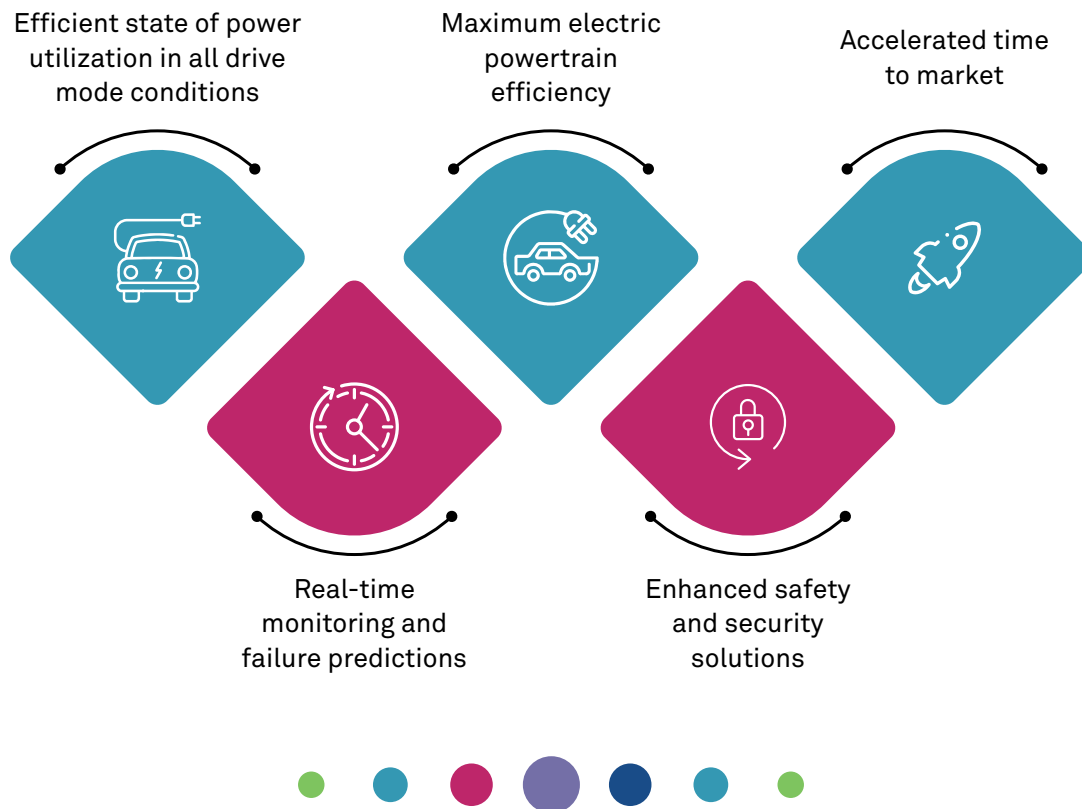


Digital twin for robust product design and development solutions

Wipro's electric powertrain ecosystem drives customization, faster time to market, and secures the control architecture and algorithms for safer drive conditions.

# Key benefits

Wipro's solutions are designed to maximize both the lifespan and performance of the modern electric powertrain.



## Features

- Cybersecurity and functional safety (ISO26262) compliant
- Integrated architectural solutions
- AUTOSAR-based software design
- More stable and responsive driving characteristics
- Reduced mechanical complexity and wear and tear

Wipro's expertise in embedded software, hardware verification and validation creates an EV powertrain ecosystem with improved performance and enhanced customer experience.

**Wipro Limited**  
Doddakannelli  
Sarjapur Road  
Bengaluru – 560 035  
India

Tel: +91 (80) 2844 0011  
Fax: +91 (80) 2844 0256  
**wipro.com**

Wipro Limited (NYSE: WIT, BSE: 507685, NSE: WIPRO) is a leading technology services and consulting company focused on building innovative solutions that address clients' most complex digital transformation needs. Leveraging our holistic portfolio of capabilities in consulting, design, engineering, and operations, we help clients realize their boldest ambitions

and build future-ready, sustainable businesses. With over 250,000 employees and business partners across 66 countries, we deliver on the promise of helping our customers, colleagues, and communities thrive in an ever-changing world.

For more information, please write to us at [info@wipro.com](mailto:info@wipro.com)