



Wipro at a Glance

Wipro Ltd. (NYSE:WIT) is a leading Information Technology, Consulting and Business Process Services company that delivers solutions to enable its clients do business better. Wipro delivers winning business outcomes through its deep industry experience and a 360 degree view of "Business through Technology." By combining digital strategy, customer centric design, advanced analytics and product engineering approach, Wipro helps its clients create successful and adaptive businesses.

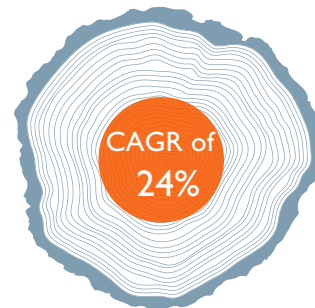
- Be passionate about clients' success
- Treat each person with respect
- Be global and responsible
- Unyielding integrity in everything we do

- Clients in 6 Continents
- 175,000+ Workforce
- Market Capitalization of over \$17 Billion

Highlights

- Wipro's Managed File Transfer as a Service (MFTaaS) Platform Enables Advanced Digital Integration on Microsoft Azure & Connected Digital Enterprises on Amazon Web Services.
- Wipro Wins the 'CIO 100' 2016 Award for its Digital Platform, myWipro.
- Greater Toronto Airports Authority Awards Futuristic IT and Business Transformation Contract to Wipro.
- Vestas Wind Systems Selects Wipro to Provide Workplace Services.

Over the last 15 years



Wipro's business has grown over **25** times

Awards

- Wipro recognized as member of Dow Jones Sustainability Index (DJSI) for the seventh time in a row. Wipro is also a member of the DJSI Emerging Markets Index.
- Wipro features in the A List of CDP's Global Report as well as the India Climate Change Report 2016.
- Wipro recognized as one of the 100 most sustainable corporations in Asia in the 2016 Channel NewsAsia Sustainability Ranking.
- Wipro won the CISCO 'Digitizing India Awards' in collaboration with CNBC.
- Wipro received the 'NASSCOM Corporate Award for Excellence in Diversity and Inclusion 2016', in the category of 'Best Program for Excellence in Gender Diversity'.
- Wipro received the Citi Lean Partner award for 2015, in recognition of its high levels of service and performance.

Financials 2015 - 2016

Gross Revenue- US \$ 7.7 Billion
 Revenue of IT services segment- US \$ 7.3 Billion
 Net Income- US \$ 1.3 Billion

Financials Q2 2016 - 2017

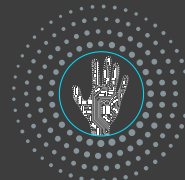
Gross Revenue- US \$ 2 Billion
 IT Services segment revenue- US \$ 1.9 Billion
 Net Income- US \$ 313 Million

Next Gen Technologies

Everything Digital



Artificial Intelligence



Internet of Things



Big Data Analytics



Open Source



Business Focus

- BFSI – Banking, Financial Services & Insurance
- MNT – Manufacturing and Technology
- COMM – Communications
- CBU – Consumer Business Unit
- ENU – Energy, Natural Resources and Utilities
- HLS – Healthcare & Life Sciences

Sustainability

- 75 Million KWh of Renewable Energy
- 52% of freshwater used was recycled
- 92% of Total Solid Waste (from India operations recycled or reused)
- 368 employees with disabilities
- 32% of women in workforce
- Presence in 55 countries comprising employees of 105 nationalities
- Campus Biodiversity retrofits at two campuses



22%
of energy from
renewable source



75 Million
MKWh
of renewable
energy



52%
fresh water
recycled

Education & Community Care

- Wipro Cares (a not-for-profit trust) works with proximate communities through partners
- EARTHIAN Sustainability program for schools and colleges
- Wipro Applying Thoughts in School
- Wipro Science Education Fellowship Program in USA
- Wipro South Africa Graduate Internship program

Management Team



Azim H. Premji
Chairman



Abidali Z. Neemuchwala
Chief Executive Officer & Member
of the Board



Rishad Premji
Chief Strategy Officer & Member
of the Board



Jatin Dalal
Chief Financial Officer

Acquisitions

- Acquired Appirio, a global cloud services company that creates next generation worker and customer experiences
- 2016: Acquired HealthPlan Services, leading technology and Business Process As A Service (BPaaS) provider in the US health insurance market
- 2015: Acquired Cellent AG, a leading IT consulting and software services company in Germany
- 2015: Acquired Designit, an award winning and global strategic design firm which specializes in designing transformative product-service experiences

Contact

Corporate Address

Wipro Limited
Doddakannelli, Sarjapur Road
Bangalore - 560 035
India
Ph: +91 (80) 2844001 |
Fax: +91 (80) 28440256

Geo Presence



Digital Presence

- www.wipro.com
- www.twitter.com/wipro
- www.linkedin.com/company/wipro
- www.youtube.com/user/Wiprovideos
- www.facebook.com/WiproTechnologies