

## Sustainable Packaging Solution for the Shop-Floor





## Sustainability in Packaging

Packaging is quintessential for every product. Importance of packaging in the business world today, has stretched far beyond the established, i.e. product safety, containment of the product, projecting brand image and conveying essential information to the consumer.

Packaging has become a key consideration impacting supply chain dynamics and is a good potential target for businesses moving towards sustainability and eco-initiatives

With cognizance of the emerging need for greener solutions, Wipro has developed the 'Sustainable Packaging Solution' – jointly with GE Fanuc Intelligent Platforms.

In order to reduce PET (Polyethylene Tetra phthalate) usage in F&B (Food & Beverages) packaging thereby minimizing environmental threat, we bring to you our MES (Manufacturing Execution System) – based solution which gives user the power to monitor & track their shop-floor operations with powerful efficiency, quality and production analysis capabilities. You are now empowered to address both industry challenges of greenhouse gas emissions, pollutants and landfill impacts as well as operational aspects of quality and efficiency.

## Solution Offering

Typically, over 50 different types of bottles/boxes/wraps/packages could be manufactured for various kinds of food/beverages at any production plant, varying in colors, shapes and sizes, including standard and customized designs. This makes the manufacturing environment highly complex and challenging to manage. Each machine on the plant floor has a set of performance parameters that must be met in order to keep the line going.



## Where Does MES Fit?

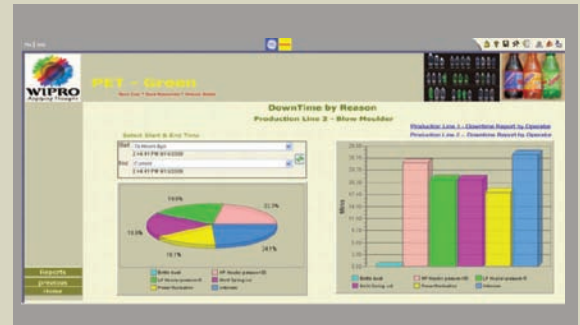
Automatic blow molders are controlled by Programmable Logic Controllers (PLC), cards or using advanced technologies as microprocessors. Though the machines are controlled automatically the level of intelligence required for improving efficiencies and reducing wastages is not sufficient. With MES, recipe settings, machine setting, and many more parameters are automated

## The Sustainable Packaging Solution for PET Packaging:

- Quick view of the recipe design for the package
- Record of all recipes and recipe changes
- Visibility to Parameters setting to improve the PET usage
- Enhanced green operations due to real time /historical waste and efficiency reports
- Green enablement of manufacturing equipments like blow molder, Extrusion or injection molder
- Reduce Quality rejects by helping identify the reason codes

## Key metrics analyzed, include:

- Tracking of Melt and Coolant temperatures, injection and packaging pressures
- Externally factors such as ambient temperatures and humidity
- Key metrics of overall equipment effectiveness (OEE) - Individual equipment on the plant floor as well as the entire factory

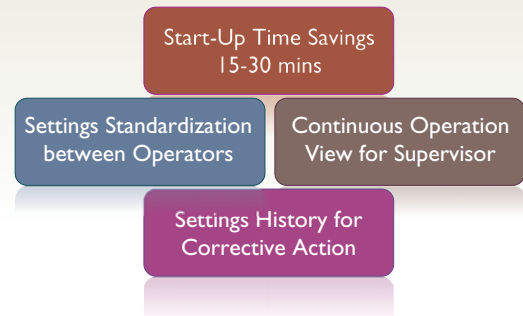


## Value Proposition

### Business Benefits:



### Operational benefits:



## Wipro for CPG Industry

Wipro's Consumer Packaged Goods (CPG) Industry Vertical, established in 2001 has since grown to a team of more than 2000 professionals who understand the key challenges faced by CPG companies in today's dynamic marketplace. With a unique blend of domain knowledge, technology expertise and delivery excellence best practices Wipro's CPG Industry Vertical provides innovative solutions to a large global CPG clientele. Our competencies lie in the area of Manufacturing Execution systems ,Procurement, Product Lifecycle Management, Supply Chain Planning, Traceability, Trade Promotion Management, Consumer & Marketing Analytics, Media Planning & Optimization , Direct Store Delivery and Demand Planning to name a few.

## Why Wipro

- Delivering technology-driven business solutions for the past 25 years
- 53 development centers, 882 clients and over 99,000 employees in 54 countries
- The world's largest independent R&D services provider and the world's largest offshore third party testing services provider
- One of the world's top offshore Indian BPO service providers and the largest offshore technology infrastructure management services provider
- The world's first PCMM and CMMi Level 5 company, and the first company outside the USA to receive the IEEE Software Process Award

## Innovation @ Work

- A dedicated 'Innovation Council' that funds over 50 projects every year in areas of product, process and services innovation
- 55+ Centers of Excellence (CoEs) to develop domain specific frameworks and solutions
- Plug-and-play technology IPs and patents to cut time-to-market for customers by over 20-25%
- Factory Model and other collaborative delivery models for 20-30% reduction in cycle-time from demand to delivery
- Platform BPO for quicker solutions deployment, scalability and transaction-based cost management

## Awards and Rankings

- Winner of the All Stars Awards at The Network World Asia All Stars Awards 2008
- Winner of SAP® Pinnacle Award for thought leadership around enterprise SOA
- IQPC's Global Excellence Award 2007
- MAKE (Most Admired Knowledge Enterprise) Award 2007
- NASSCOM'S Technology Innovation Award
- Everest Group's Outstanding Excellence Award with Delta Air Lines for 2006 and Nortel for 2007
- Business World's Innovation for Indian Award
- ASTDs 'BEST' Award, thrice in a row
- Dale Carnegie 'Global Leadership Award'
- IT Outsourcing Services Provider of the Year; National Outsourcing Association (NOA), UK
- Top Indian Outsourcing Provider; International Association of Outstanding Professionals (IAOP), USA, twice in a row
- The only Indian Company in Business Week's IN25 'Champions of Innovation' list
- Top Indian outsourcing firm in the Global Outsourcing 100 rankings, International Association of Outstanding Professionals (IAOP)

## Wipro Technologies

Wipro (NYSE:WIT) is a \$5 bn global provider of IT Services, Outsourced R&D, Infrastructure Outsourcing, Business Process Services, and Business Consulting. With 25 years in the global delivery of technology services, Wipro is the world's largest third-party provider of R&D services and the world's first PCMM and CMMi level company. Rated by industry analysts as a leader in global package implementation projects, CRM services, and infrastructure Management among offshore firms, Wipro has won global recognition and awards for innovation and outsourcing excellence.

For Further Information, please contact: [cpg-industry@wipro.com](mailto:cpg-industry@wipro.com) Wipro Technologies  
Visit us at [www.wipro.com](http://www.wipro.com) Copyright © 2009 Wipro Technologies

**New York:** 245 Park Avenue, 24th Floor, New York, NY 10167  
Phone: (212)792 4256, Fax: (212)372 8798