

# #WANFreedom: Carrier-neutral managed SD-WAN

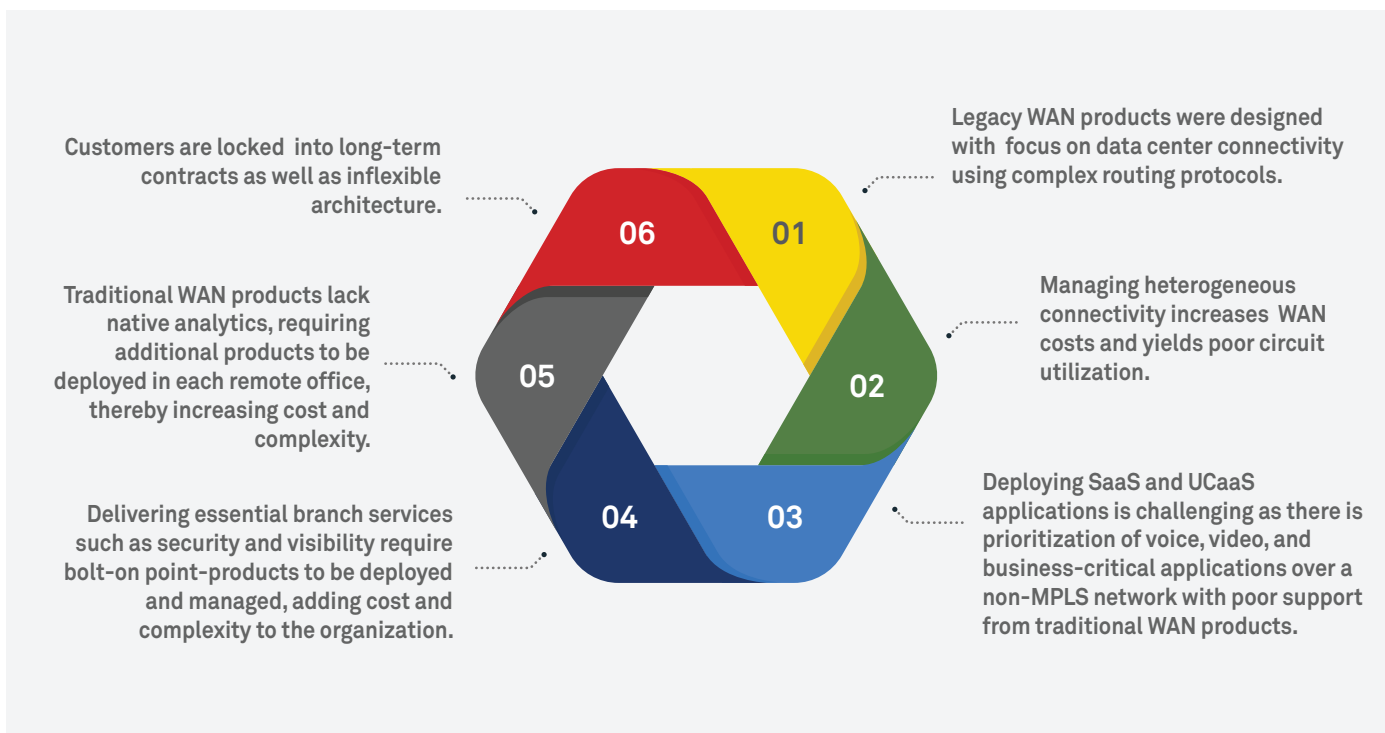


Unshackle connected  
opportunities



Traditional Wide Area Network (WAN) architecture has been rendered obsolete due to the rising demand for cloud and Software-as-a-Service (SaaS) applications, digitization of the remote office, entailing low-costs, and commodity broadband connectivity.

Today, enterprises need a WAN solution that delivers applications from the cloud, SaaS, and data centers over any combination of underlying transports including MPLS, LTE and broadband, while enforcing performance, security, and compliance policies. Modern enterprises face the following challenges in traditional WAN products:



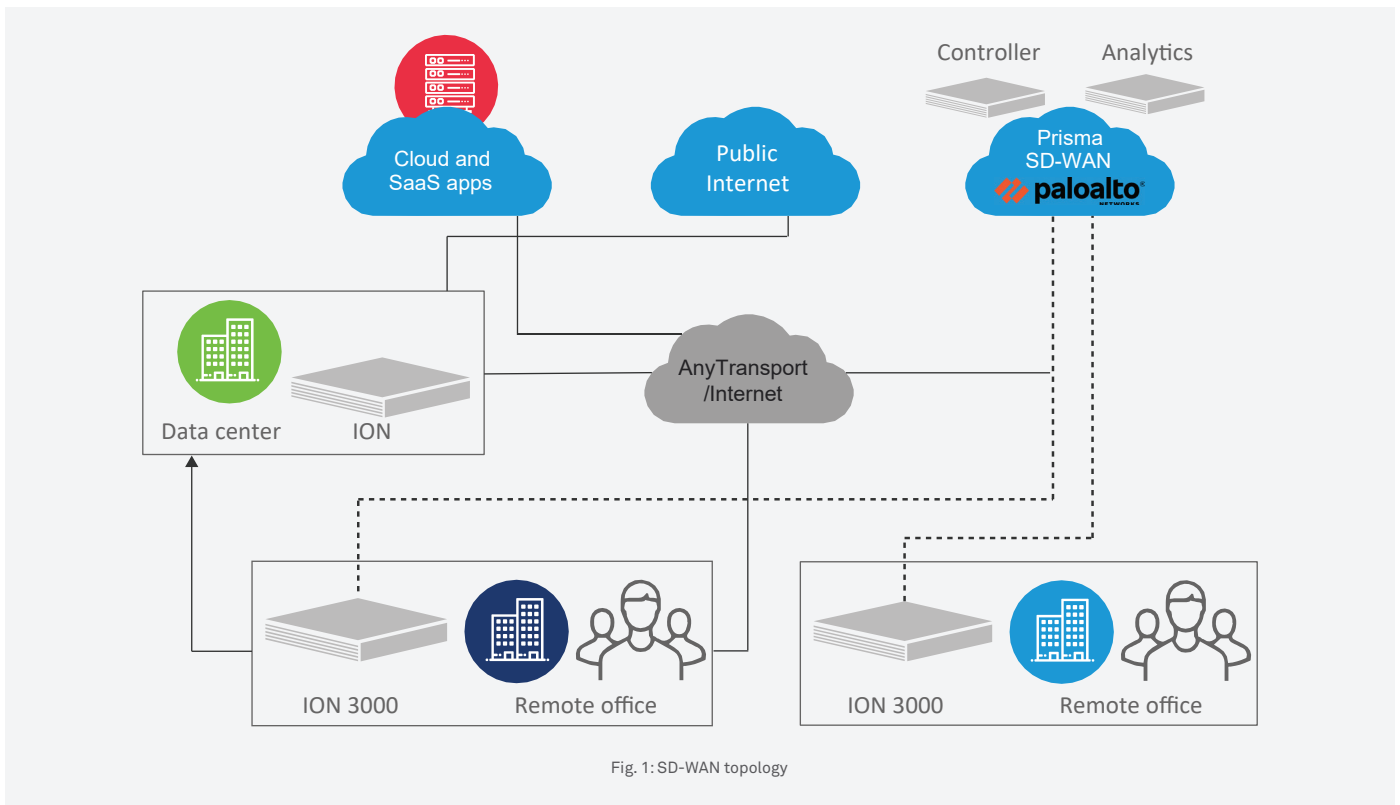
To meet the demands of the modern enterprise, the network must evolve from decades old packet-routing model to an application defined approach. With this approach, the network is built using application policies that directly capture

business and I/T intent, using deep application and network analytics to dynamically self-heal while delivering rich application experiences to remote offices.

## Introducing #WANFreedom

#WANFreedom is Wipro's software-defined WAN (SD-WAN) managed offering. Powered by Palo Alto Networks Prisma® SD-WAN the solution is industry's first next-generation SD-WAN solution that makes the secure cloud-delivered branch possible, delivering an RoI of up to 243%, and ensuring exceptional user experience with app-defined policies.

The solution also simplifies network and security operations using Machine Learning and Automation. #WANFreedom allows you to open up connected opportunities like breaking the chains of legacy network architecture to embrace business value provided by the cloud, SaaS and modern software architecture.



## Rich, actionable analytics

The foundation of #WANFreedom is the rich, actionable analytics collected over applications and WAN links. Each application flow is examined for key performance indicators to determine user experience. WAN links are monitored to determine availability, utilization, congestion and service quality to understand level of performance.

This data is not only visualized in an easy-to-use cloud management portal – giving you instant visibility into how your applications, sites, and WAN links are performing – but also serving as the foundation for the powerful machine learning algorithms used by ION in determining how application traffic is transported across your network. The self-healing characteristics of SD-WAN enable immediate decision-making, according to the business policies you define, to provide your users with the best experience possible and with minimum interruption.

With Layer 3 packet-based policies, organizations are limited in creating application-based networking policies. They lack application visibility, making it difficult for networking teams to deliver on application SLAs. In addition, legacy SD-WAN solutions lack scalability and require constant manual intervention for Day 2 operations.

This creates substantial administrative overhead for networking and operation teams, leading to increase in complexity and costs. As the industry's first and only next-generation SD-WAN solution, the next generation of SD-WAN from Palo Alto Networks takes a fundamentally different approach with Prisma® SD-WAN. Palo Alto Networks alone can provide SD-WAN with an ROI of up to 243%, simplify network operations by using machine learning to eliminate up to 99% of network trouble tickets and improve the end-user experience with a tenfold increase in WAN bandwidth at a cost lower than that of legacy architectures.

## Wipro differentiators

---

Wipro's industry-leading SD-WAN solution stands head and shoulders above other solutions in the market because of the application defined architecture provided by Palo Alto Networks Prisma SD-WAN. Prisma SD-WAN centers the operation of the entire network on the application and not on low-level networking components.

## Key Features

---

With #WANFreedom, I/T organizations can:

### 1. Deploy cloud, SaaS, and data center applications without compromise

Prisma SD-WAN inherently provides these rich capabilities, while integrating with industry leading security solutions which when combined with the cloud-native Prisma Access service, delivers industry's most comprehensive Secure Access Service Edge (SASE) platform. Palo Alto Networks SASE solution combines a global high-performance network with next-gen SD-WAN to simplify the delivery of consistent security at scale while ensuring an optimal work-from-anywhere experience.

### 2. Rapidly respond to business and I/T intent via application policies

Deliver business-critical applications by simply specifying application policies for performance, security and compliance.

### 3. Decoupling infrastructure and policy, I/T can move at the speed of business

Deployment times are reduced from months and quarters to mere hours and days.

### 4. Gain freedom from proprietary hardware

Reduce remote office hardware footprint, dramatically cutting costs by taking advantage of Intel x86-based platforms and a richer set of services deployable as software.

Prisma SD-WAN provides three key architectural benefits:

- 1** Gain deep application visibility with Layer 7 intelligence for network policy creation and traffic engineering. This can significantly improve the end-user experience while enabling network teams to deliver SLAs for all applications.
- 2** Automate operations and problem avoidance using machine learning and data science methodologies. This enables agile DevOps approaches for deployment by leveraging APIs to simplify network operations.
- 3** Enable delivery of all branch services to and from the cloud, including networking and security. This can simplify WAN management while increasing RoI.

### 5. Gain carrier freedom

Enjoy the freedom of taking advantage of single or multiple forms of WAN connectivity at any site seamlessly including MPLS, broadband Internet and other transports. Save up to 70% on WAN costs compared to legacy MPLS-only models.

### 6. Deploy a self-healing network

Deep application and network analytics, coupled with machine learning are automatically applied to the network to self-heal application performance that delivers SLAs for all apps and offers the best end-user experience.

## Key Benefits

---

With Prisma SD-WAN, I/T organizations realize the following benefits over other SD-WAN solutions:

### 1. Instant time to value

Wipro's rich experience deploying and managing global networks helps you plan, deploy, and manage your SD-WAN without rip and replace, all at the speed of your choice.

### 2. Policies that align with business intent

Prisma SD-WAN unifies performance, security, and compliance into a global policy tied to an application, freeing you of interoperability nightmares rising from seldom-compatible network features.

### 3. Instant time to value

Prisma SD-WAN establishes secure site-to-site connections over any WAN transport. You can be freed from dependencies on the carrier and ensure improved SLAs and prices from the carriers.

### 4. Proven experience in global project delivery

Wipro has a dedicated organizational structure for system integration and project delivery, with a track record of 50+ successful data center infrastructure, WAN migrations, and WAN consolidations globally with large enterprises.

### 5. Wipro SDx CoE lab

Wipro's SDx (Software Defined Everything) Center of Excellence builds, tests and validates reference architecture, custom integrations, and implementation methodologies for different enterprise requirements.

### 6. Competency and skills

Wipro staff of 4000+ network engineers are process-trained, certified, and technically skilled. SDx Academy, part of the SDx CoE, supports the training and skill enablement for SD-WAN delivery, to ensure successful deployment and operation.

### 7. WAN and enterprise assessments

Wipro connects across siloes and I/T domains to provide a WAN assessment that can reduce costs,

enable new business applications and adopt the cloud in an uncompromised manner. Wipro provides prescriptive Rols based on analytics and data.

### 8. Next-generation managed services

Wipro's ServiceNXTTM platform provides end-to-end integrated I/T management to reduce customers' operational cost and maximize up-time.

### 9. Self-healing network built on machine learning

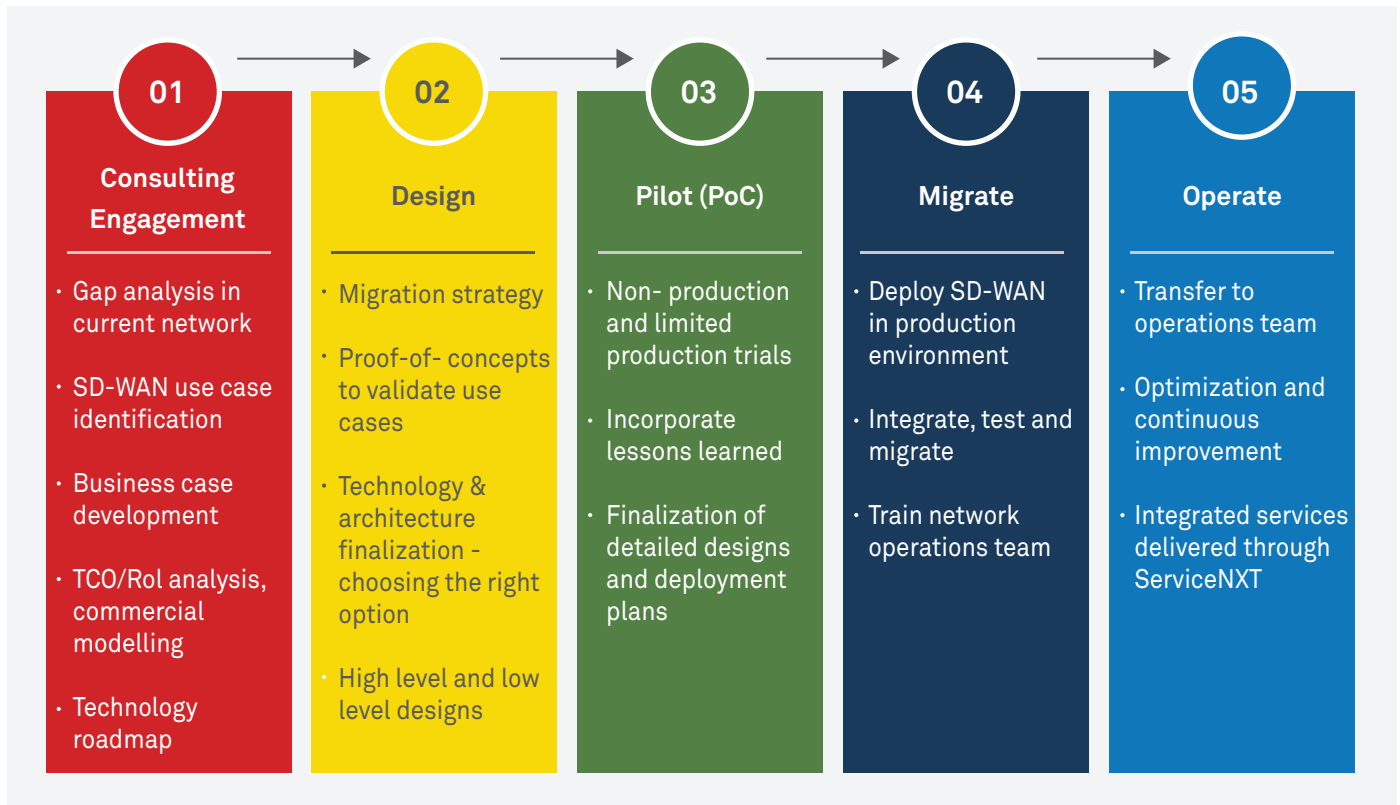
Prisma SD-WAN provides better insights into application performance with intelligent handling decisions, ultimately delivering optimal performance and the best user experience.



## Wipro's SD-WAN lifecycle services

---

SD-WAN solutions are backed by Wipro's comprehensive life-cycle services covering consulting, planning and design, product procurement, implementation and managed network services.



## Immediate time-to-value

---

#WANFreedom can be deployed in one of two modes to ensure a strategic, seamless transition from a legacy WAN or legacy SD-WAN architecture to a next generation SD-WAN. First, #WANFreedom can be deployed in Clarity mode, which connects between your LAN switch and WAN routers in the branch office. In this mode, all the analytics functions are employed to understand how your applications, sites, and WAN links are being used. This is helpful for capacity planning, deep understanding of application performance and troubleshooting when issues arise.

Once you are comfortable with Clarity, SD-WAN can be enabled, and #WANFreedom automatically creates a secure application defined SD-WAN fabric between sites and manages application traffic according to the policy you define.

This ensures optimum experience for end-users and any application, allowing you to take advantage of heterogeneous WAN connections and reducing remote office hardware including routers and servers.

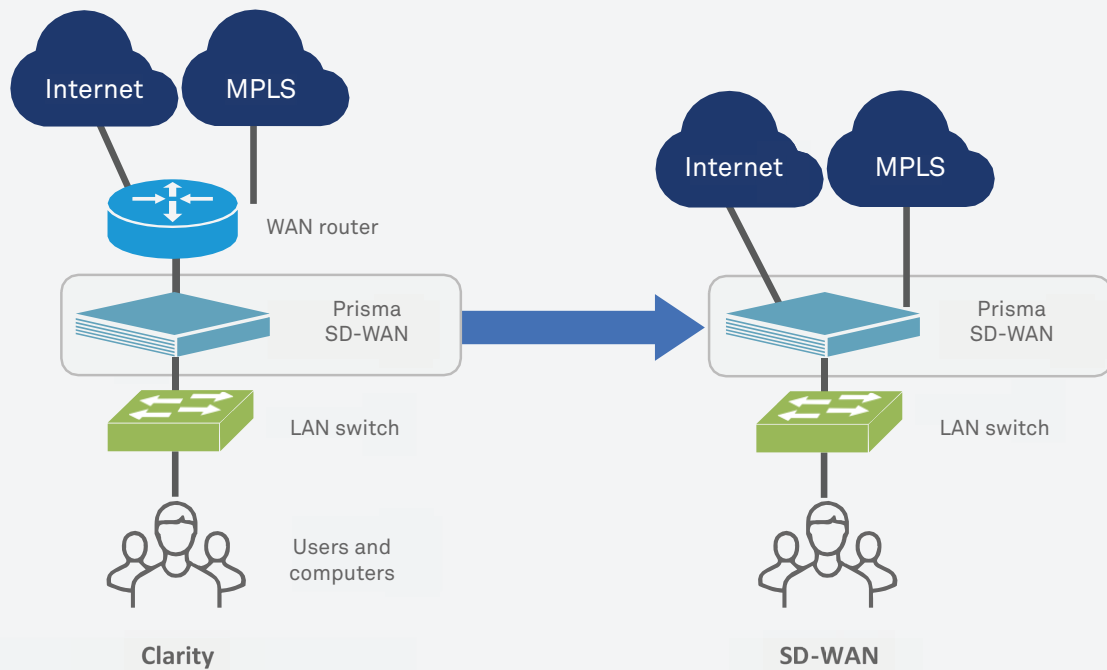


Fig. 3: Deployment modes of WAN Freedom

## Summary

#WANFreedom helps I/T organizations transform their limited legacy WAN architecture to an enabling platform. With #WANFreedom, I/T can confidently adopt, deploy, and integrate cloud, SaaS, and data center applications using any transport, including MPLS, broadband and cellular. Wipro SD-WAN radically shifts configuration and policy away from disjointed and outdated networking commands and rules to a global policy that aligns with business intent encompassing performance, security, and compliance.

Lower WAN costs are realized as transport independence is gained, providing the ability to take advantage of transports that meet price and performance metrics including MPLS, broadband Internet and others. Remote office infrastructure and management costs are reduced, turn-up times are shortened and visibility is enhanced. You can now quickly solve performance and availability related problems through actionable insights.





---

**Wipro Limited**  
Doddakannelli,  
Sarjapur Road,  
Bangalore-560 035,  
India  
Tel: +91 (80) 2844 0011  
Fax: +91 (80) 2844 0256  
**wipro.com**

Wipro Limited (NYSE: WIT, BSE: 507685, NSE: WIPRO) is a leading global information technology, consulting and business process services company. We harness the power of cognitive computing, hyper-automation, robotics, cloud, analytics and emerging technologies to help our clients adapt to the digital world and make them successful. A company recognized globally for its comprehensive portfolio of services,

strong commitment to sustainability and good corporate citizenship, we have over 190,000 dedicated employees serving clients across six continents. Together, we discover ideas and connect the dots to build a better and a bold new future.

For more information,  
please write to us at [info@wipro.com](mailto:info@wipro.com)